

Recombinant Human SAE1 Protein, Myc/DDK-tagged, C13 and N15-labeled

Cat. No. SAE1-1072H **Lot. No.** (See product label)

SPECIFICATION

Product Overview	SAE1 MS Standard C13 and N15-labeled recombinant protein (NP_001139185) with a C-terminal MYC/DDK tag, was expressed in HEK293 cells.
Species	Human
Source	HEK293
Description	Posttranslational modification of proteins by the addition of the small protein SUMO (see SUMO1), or sumoylation, regulates protein structure and intracellular localization. SAE1 and UBA2 form a heterodimer that functions as a SUMO-activating enzyme for the sumoylation of proteins.
Molecular Mass	32.9 kDa
AA Sequence	MVEKEEAGGGISEEEAAQYDRQIRLWGLEAQKRLRASRVLLVGLKGLGAEIAKNLIL AGVKGLTMLDHEQVTPEDPGAQFLIRTGSVGRNRAEASLERAQNLNPMVDVKVDTE DIEKKPESFFTQFDVCLTCCSRDVIVKVDQICHKNSIKFFTGDVFGYHGYTFANLGE HEFVEEKTKVAKVSQGVEDGPDTKRAKLDSETTMVKKKVVFCPVKEALEVDWSSE KAKAALKRTTSDYFLLQGPVSAGPSSQQLLLLRWHEGEWDCGVPWPQVNSRFGSP RDANCSMPTCIPCPLPSTRTRPLEQKLISEEDLAANDILDYKDDDDKV
Purity	> 80% as determined by SDS-PAGE and Coomassie blue staining
Stability	Stable for 3 months from receipt of products under proper storage and handling

 Tel: 1-631-559-9269 1-516-512-3133

 Email: info@creative-biomart.com  Fax: 1-631-938-8127

 45-1 Ramsey Road, Shirley, NY 11967, USA

conditions.

Storage Store at -80 centigrade. Avoid repeated freeze-thaw cycles.

Concentration 50 µg/mL as determined by BCA

Storage Buffer 100 mM glycine, 25 mM Tris-HCl, pH 7.3.

GENE INFORMATION

Gene Name SAE1 SUMO1 activating enzyme subunit 1 [Homo sapiens (human)]

Official Symbol SAE1

Synonyms SAE1; SUMO1 activating enzyme subunit 1; SUMO-activating enzyme subunit 1; activator Of sumo 1; AOS1; FLJ3091; Sua1; activator of SUMO1; SUMO-1 activating enzyme subunit 1; sentrin/SUMO-activating protein AOS1; SUMO-1 activating enzyme E1 N subunit; ubiquitin-like 1-activating enzyme E1A; ubiquitin-like protein SUMO-1 activating enzyme; SUA1; UBLE1A; HSPC140;

Gene ID 10055

mRNA Refseq NM_001145713

Protein Refseq NP_001139185

MIM 613294

UniProt ID Q9UBE0

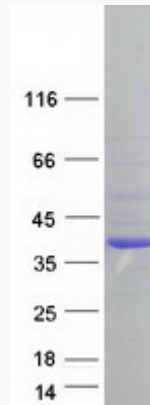
 Tel: 1-631-559-9269 1-516-512-3133

 Email: info@creative-biomart.com  Fax: 1-631-938-8127

 45-1 Ramsey Road, Shirley, NY 11967, USA



SDS-PAGE



Tel: 1-631-559-9269 1-516-512-3133

Email: info@creative-biomart.com Fax: 1-631-938-8127

45-1 Ramsey Road, Shirley, NY 11967, USA