

# Active Recombinant Full Length Human SAE1 Protein, C-Flag-tagged

Cat. No. SAE1-436HFL Lot. No. (See product label)

## SPECIFICATION

<b>Product Overview</b>	Recombinant Full Length Human SAE1 Protein, fused to Flag-tag at C-terminus, was expressed in Mammalian cells.
<b>Species</b>	Human
<b>Source</b>	Mammalian Cells
<b>Description</b>	Posttranslational modification of proteins by the addition of the small protein SUMO, or sumoylation, regulates protein structure and intracellular localization. SAE1 and UBA2 form a heterodimer that functions as a SUMO-activating enzyme for the sumoylation of proteins.
<b>Form</b>	25 mM Tris HCl, pH 7.3, 100 mM glycine, 10% glycerol.
<b>Bio-activity</b>	ELISA capture for autoantibodies
<b>Molecular Mass</b>	38.3 kDa
<b>AA Sequence</b>	MVEKEEAGGGISEEEAAQYDRQIRLWGLEAQKRLRASRVLLVGLKGLGAEIAKNLIL AGVKGLTMLDHEQ VTPEDPGAQFLIRTGSVGRNRAEASLERAQNLNPMVDVKVDT EDIEKKPESFFTQFDAVCLTCCSRDVIV KVDQICHKNSIKFFTGDVFGYHGYTFANLG EHEFVEEKTKVAKVSQGVEDGPDTKRAKLDSSSETTMVKKK VVFCPVKEALEVDWS SEKAKAALKRTTSDYFLLQVLLKFRTDKGRDPSSDYEEDSELLQIRNDVLDLSDL GIS PDLLPEDFVRYCFSEMAPVCAVVGILAQEIVKALSQRDPPHNNFFFFDGMKGNIV

 Tel: 1-631-559-9269 1-516-512-3133

 Email: [info@creative-biomart.com](mailto:info@creative-biomart.com)  Fax: 1-631-938-8127

 45-1 Ramsey Road, Shirley, NY 11967, USA

ECLGPKTRTRPLEQKLISEEDLAANDILDYKDDDDKV

**Purity** > 80% as determined by SDS-PAGE and Coomassie blue staining.

**Stability** Stable for 12 months from the date of receipt of the product under proper storage and handling conditions. Avoid repeated freeze-thaw cycles.

**Storage** Store at -80 centigrade.

**Concentration** >50 ug/mL as determined by microplate BCA method.

**Preparation** Recombinant protein was captured through anti-DDK affinity column followed by conventional chromatography steps.

**Protein Pathways** Ubiquitin mediated proteolysis

**Full Length** Full L.

## GENE INFORMATION

**Gene Name** [SAE1 SUMO1 activating enzyme subunit 1 \[ Homo sapiens \(human\) \]](#)

**Official Symbol** [SAE1](#)

**Synonyms** AOS1; SUA1; UBLE1A; HSPC140


**Gene ID** [10055](#)

**mRNA Refseq** [NM\\_005500.3](#)

**Protein Refseq** [NP\\_005491.1](#)

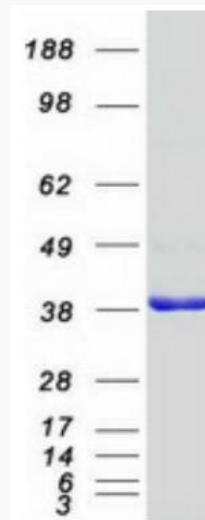
 Tel: 1-631-559-9269 1-516-512-3133

 Email: [info@creative-biomart.com](mailto:info@creative-biomart.com)  Fax: 1-631-938-8127

 45-1 Ramsey Road, Shirley, NY 11967, USA

**MIM** 613294

**UniProt ID** Q9UBE0



Coomassie blue staining of purified SAE1 protein.

 Tel: 1-631-559-9269 1-516-512-3133

 Email: [info@creative-biomart.com](mailto:info@creative-biomart.com)  Fax: 1-631-938-8127

 45-1 Ramsey Road, Shirley, NY 11967, USA