

Recombinant Human SUMO1 Activating Enzyme Subunit 1

Cat. No. SAE1-61H **Lot. No.** (See product label)

SPECIFICATION

Product Overview	Recombinant human SAE1(aa1-347) produced in E. coli is a heterodimer that acts as the activating enzyme for SUMO-1.
Species	Human
Source	E.coli
Protein Length	1-347 a.a.
Description	Posttranslational modification of proteins by the addition of the small protein SUMO (see SUMO1; MIM 601912), or sumoylation, regulates protein structure and intracellular localization. SAE1 and UBA2 (MIM 613295) form a heterodimer that functions as a SUMO-activating enzyme for the sumoylation of proteins.
Concentration	0.2mg/ml
Formulation	Liquid. In 50mM TRIS-HCl, pH 7.5, containing 1mM DTT and 200mM potassium chloride.
Storage	-80°C, Long Term.
Official Symbol	SAE1

GENE INFORMATION

 Tel: 1-631-559-9269 1-516-512-3133

 Email: info@creative-biomart.com  Fax: 1-631-938-8127

 45-1 Ramsey Road, Shirley, NY 11967, USA

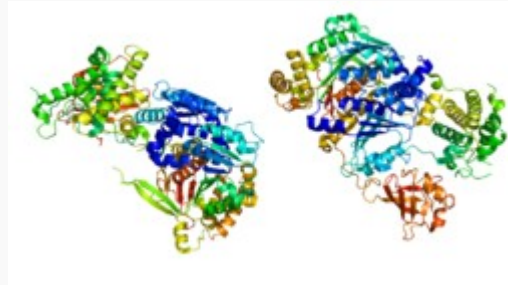
Gene Name	SAE1 SUMO1 activating enzymesubunit 1 [Homo sapiens]
Synonyms	SAE1; SUMO1 activatingenzyme subunit 1; SUMO-1 activating enzyme E1 N subunit; SUMO-1 activatingenzyme subunit 1; SUMO-activating enzyme subunit 1; activator of SUMO1;sentrin/SUMO-activating protein AOS1; ubiquitin-like 1-activating enzyme E1A;ubiquitin-like protein SUMO-1 activating enzyme; AOS1; FLJ3091; HSPC140
Gene ID	10055
mRNA Refseq	NM_001145713
Protein Refseq	NP_001139185
MIM	613294
UniProt ID	Q9UBE0
Chromosome Location	19q13.32
Pathway	Ubiquitin mediated proteolysis
Function	ATP-dependent protein binding; contributes_to SUMO activatingenzyme activity; enzyme activator activity; ligase activity; protein heterodimerizationactivity; protein binding; ubiquitin activating enzyme activity

 Tel: 1-631-559-9269 1-516-512-3133

 Email: info@creative-biomart.com  Fax: 1-631-938-8127

 45-1 Ramsey Road, Shirley, NY 11967, USA

PDBrenderingbased
on 1y8q.



 Tel: 1-631-559-9269 1-516-512-3133

 Email: info@creative-biomart.com  Fax: 1-631-938-8127

 45-1 Ramsey Road, Shirley, NY 11967, USA