

# Recombinant Full Length Human SAG Protein, C-Flag-tagged

Cat. No. SAG-567HFL Lot. No. (See product label)

## SPECIFICATION

<b>Product Overview</b>	Recombinant Full Length Human SAG Protein, fused to Flag-tag at C-terminus, was expressed in Mammalian cells.
<b>Species</b>	Human
<b>Source</b>	Mammalian Cells
<b>Description</b>	Members of arrestin/beta-arrestin protein family are thought to participate in agonist-mediated desensitization of G-protein-coupled receptors and cause specific dampening of cellular responses to stimuli such as hormones, neurotransmitters, or sensory signals. S-arrestin, also known as S-antigen, is a major soluble photoreceptor protein that is involved in desensitization of the photoactivated transduction cascade. It is expressed in the retina and the pineal gland and inhibits coupling of rhodopsin to transducin in vitro. Additionally, S-arrestin is highly antigenic, and is capable of inducing experimental autoimmune uveoretinitis. Mutations in this gene have been associated with Oguchi disease, a rare autosomal recessive form of night blindness.
<b>Form</b>	25 mM Tris HCl, pH 7.3, 100 mM glycine, 10% glycerol.
<b>Molecular Mass</b>	44.9 kDa
<b>AA Sequence</b>	MAASGKTSKSEPNHVIFKKISRDKSVTIYLGNRDYIDHVSQVQPVDGVVLDVDPDLVK GKKVYVTLTCAFR YGQEDIDVIGLTFRRDLYFSRVQVYPPVGAASTPTKLQESLLKK LGSNTYPFLLTFFPDYLPSCSVMLQPAP QDSGKSCGVDFEVKAFATDSTDAEEDKIPK

 Tel: 1-631-559-9269 1-516-512-3133

 Email: [info@creative-biomart.com](mailto:info@creative-biomart.com)  Fax: 1-631-938-8127

 45-1 Ramsey Road, Shirley, NY 11967, USA

KSSVRLIRKVQHAPLEMGPQPRAEAAWQFFMSDKPLHLA VSLNKEIYFHGEPIPVT  
 VVTNNTTEKTVKKIKAFVEQVANVVLYSSDYYVKPVAMEEAQEKVPPNSTLTK TLTL  
 LPLLTNNRERRGIALDGGIKKHEDTNLASSTIIKEGIDRTVLGILVSYQIKVKLTVSGFLGE  
 LTSSE  
 VATEVPFRLMHPQPEDPAKESYQDANLVFEEFARHNLKDAGEAEEGKRDKNDVDE  
 TRTRPLEQKLISEEDLAANDILDYKDDDDKV

<b>Purity</b>	> 80% as determined by SDS-PAGE and Coomassie blue staining.
<b>Stability</b>	Stable for 12 months from the date of receipt of the product under proper storage and handling conditions. Avoid repeated freeze-thaw cycles.
<b>Storage</b>	Store at -80 centigrade.
<b>Concentration</b>	>50 ug/mL as determined by microplate BCA method.
<b>Preparation</b>	Recombinant protein was captured through anti-DDK affinity column followed by conventional chromatography steps.
<b>Protein Families</b>	Druggable Genome
<b>Full Length</b>	Full L.

## GENE INFORMATION

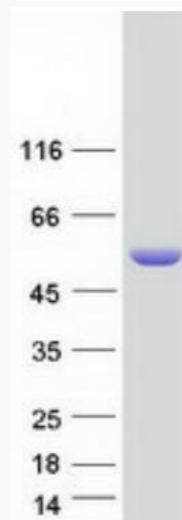
<b>Gene Name</b>	SAG S-antigen visual arrestin [ Homo sapiens (human) ]
<b>Official Symbol</b>	SAG
<b>Synonyms</b>	RP47; S-AG

 Tel: 1-631-559-9269 1-516-512-3133

 Email: [info@creative-biomart.com](mailto:info@creative-biomart.com)  Fax: 1-631-938-8127

 45-1 Ramsey Road, Shirley, NY 11967, USA

<b>Gene ID</b>	6295
<b>mRNA Refseq</b>	NM_000541.5
<b>Protein Refseq</b>	NP_000532.2
<b>MIM</b>	181031
<b>UniProt ID</b>	P10523



Coomassie blue staining of purified SAG protein.

 Tel: 1-631-559-9269 1-516-512-3133

 Email: [info@creative-biomart.com](mailto:info@creative-biomart.com)  Fax: 1-631-938-8127

 45-1 Ramsey Road, Shirley, NY 11967, USA