

Recombinant *T. gondii* SAG1 Antigen, His tagged

Cat. No. SAG1-049T Lot. No. (See product label)

SPECIFICATION

Product Overview	The mature anchor-less antigen p30 of the <i>T. gondii</i> (SAG1) has been prepared as a recombinant antigen fused to a his-tag in its C-terminal.
Species	<i>T.gondii</i>
Source	<i>P.pastoris</i>
Description	Major surface antigen p30 (SAG1) induces significant levels of p30 antibodies in all patients with toxoplasmosis. It has been described in the literature that this 30 kDa protein has the capacity to carry out the serological analysis of <i>Toxoplasma</i> infections.
Tag	C-His
Molecular Mass	Determined by SDS-PAGE, the protein appears in three different positions, with one band like a smear between molecular markers of 25.4 and 35 kDa, another above the marker of 45 kDa and a higher band around marker of 66.2 kDa. The relative molecular mass calculated from amino acid sequence and without glycosylation is 30,361.23 Da.
Purity	> 95% by observation on SDS-PAGE electrophoresis
Applications	WB, DB, IE, DE, CLIA, LF
Storage	Upon arrival, it should be aliquoted in order to avoid repeated freezing and thawing

 Tel: 1-631-559-9269 1-516-512-3133

 Email: info@creative-biomart.com  Fax: 1-631-938-8127

 45-1 Ramsey Road, Shirley, NY 11967, USA

cycles and stored at -20 to -80 centigrade. In order to defrost the protein, maintain the aliquot at 25 centigrade without shaking to avoid aggregation.

Storage Buffer

20 mM phosphate buffer pH 7, 0.15 M NaCl and 0.1% polyoxyethylene (10) tridecyl ether

Concentration

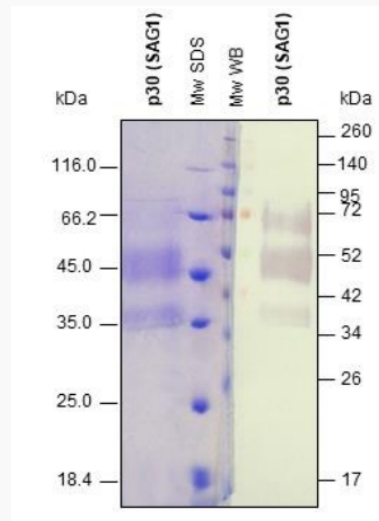
1.26 mg/mL

Shipping

Protein is shipped with dry ice.

Reference

1. Santoro, F., Charif, H. and Capron, A. The immunodominant epitope of the major membrane tachyzoite protein (p30) of *Toxoplasma gondii*. 1986, *Parasite Immunol.* 8:631-9.
2. Gill SC, von Hippel PH. Calculation of protein extinction coefficients from amino acid sequence data. *Anal Biochem.* 1989 Nov 1;182(2):319-26.

Purity


SDS-PAGE analysis (15%) of 5 μ L of recombinant p30. Purity is > 95%, as

 Tel: 1-631-559-9269 1-516-512-3133

 Email: info@creative-biomart.com  Fax: 1-631-938-8127

 45-1 Ramsey Road, Shirley, NY 11967, USA



determined by gel electrophoresis. Different bands are due to the heterogeneous glycosylation plus the dimerization capacity of this protein.

 Tel: 1-631-559-9269 1-516-512-3133

 Email: info@creative-biomart.com  Fax: 1-631-938-8127

 45-1 Ramsey Road, Shirley, NY 11967, USA