

Recombinant Human SAMM50 protein, His-tagged

Cat. No. SAMM50-3294H Lot. No. (See product label)

SPECIFICATION

Product Overview	Recombinant Human SAMM50 protein(1-201 aa), fused with N-terminal His tag, was expressed in E.coli.
Species	Human
Source	E.coli
ProteinLength	1-201 aa
Form	The purified protein was lyophilized from sterile phosphate-buffered saline (PBS: 58 mM Na ₂ HPO ₄ , 17 mM NaH ₂ PO ₄ , 68 mM NaCl, pH 7.4). Prior to lyophilization, 5% (w/v) trehalose and 5% (w/v) mannitol were incorporated as cryoprotective excipients.
AASequence	MGTVHARSLEPLPSSGPDFGGLGEEAEFVEVEPEAKQEILENKDVVVQHVHFDGLG RTKDDIIICEIGDVFKAKNLIEVMRKSHEAREKLLRLGIFRQVDVLIDTCQGDDALPNG LDVTFEVTCLRRLTGSYNTMVGNNEGSMVLGKLKPNLLGRAEKVTFQFSYGTKETS YGLSFFKPRPGNFERNFSVNLKVTGQFPW
Purity	85%, by SDS-PAGE with Coomassie Brilliant Blue staining.
Storage	Store at 2-8°C for 1-2 weeks. Aliquot and store at -20°C to -80°C for up to 3 months, reconstitution with sterile water and addition of an equal volume of glycerol. Avoid repeat freeze-thaw cycles.

 Tel: 1-631-559-9269 1-516-512-3133

 Email: info@creative-biomart.com  Fax: 1-631-938-8127

 45-1 Ramsey Road, Shirley, NY 11967, USA

Reconstitution

Dissolve the product in 200 µl sterile water to achieve a working concentration of 0.25 g/µl. If experimental compatibility allows, mix the aqueous solution with an equal volume of glycerol (1:1 ratio) after initial reconstitution.

GENE INFORMATION
Gene Name

SAMM50 sorting and assembly machinery component 50 homolog (*S. cerevisiae*) [
Homo sapiens]

Official Symbol

SAMM50

Synonyms

SAMM50; sorting and assembly machinery component 50 homolog (*S. cerevisiae*);
sorting and assembly machinery component 50 homolog; CGI 51; OMP85; TOB55;
TRG 3; YNL026W; sorting and assembly machinery 50kDa; transformation-related
gene 3 protein; SAM50; TRG-3; CGI-51; FLJ35825; FLJ42905; FLJ99036;

Gene ID

25813

mRNA Refseq

NM_015380

Protein Refseq

NP_056195

MIM


612058

UniProt ID

Q9Y512

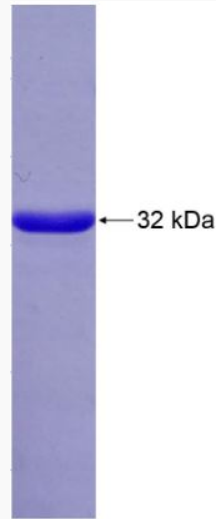
 Tel: 1-631-559-9269 1-516-512-3133

 Email: info@creative-biomart.com  Fax: 1-631-938-8127

 45-1 Ramsey Road, Shirley, NY 11967, USA



SDS-PAGE



Tel: 1-631-559-9269 1-516-512-3133

Email: info@creative-biomart.com Fax: 1-631-938-8127

45-1 Ramsey Road, Shirley, NY 11967, USA