

# Recombinant Human SAR1A Protein, Myc/DDK-tagged, C13 and N15-labeled

**Cat. No.** SAR1A-2134H    **Lot. No.** (See product label)

## SPECIFICATION

<b>Product Overview</b>	SAR1A MS Standard C13 and N15-labeled recombinant protein (NP_001136120) with a C-terminal MYC/DDK tag, was expressed in HEK293 cells.
<b>Species</b>	Human
<b>Source</b>	HEK293
<b>Description</b>	Involved in transport from the endoplasmic reticulum to the Golgi apparatus. Required to maintain SEC16A localization at discrete locations on the ER membrane perhaps by preventing its dissociation. SAR1A-GTP-dependent assembly of SEC16A on the ER membrane forms an organized scaffold defining endoplasmic reticulum exit sites (ERES).
<b>Molecular Mass</b>	22.4 kDa
<b>AA Sequence</b>	MSFIFEWIYNGFSSVLQFLGLYKKSGKLVFLGLDNAGKTTLLHMLKDDRLGQHVPTL HPTSEELTIAGMTFTTDFDLGGHEQARRVWKNYLPAINGIVFLVDCADHSRLVESKVE LNALMTDETISNVPILILGNKIDRTDAISEEKLREIFGLYGQTTGKGNVTLKELNARPME VFMCSVLKRQGYGEGFRWLSQYIDTRTRPLEQKLISEEDLAANDILDYKDDDDKV
<b>Purity</b>	> 80% as determined by SDS-PAGE and Coomassie blue staining
<b>Stability</b>	Stable for 3 months from receipt of products under proper storage and handling conditions.

 Tel: 1-631-559-9269    1-516-512-3133

 Email: [info@creative-biomart.com](mailto:info@creative-biomart.com)     Fax: 1-631-938-8127

 45-1 Ramsey Road, Shirley, NY 11967, USA

<b>Storage</b>	Store at -80 centigrade. Avoid repeated freeze-thaw cycles.
<b>Concentration</b>	50 µg/mL as determined by BCA
<b>Storage Buffer</b>	100 mM glycine, 25 mM Tris-HCl, pH 7.3.
<b>GENE INFORMATION</b>	
<b>Gene Name</b>	SAR1A secretion associated Ras related GTPase 1A [ Homo sapiens (human) ]
<b>Official Symbol</b>	SAR1A
<b>Synonyms</b>	SAR1A; SAR1 homolog A (S. cerevisiae); SAR1a gene homolog (S. cerevisiae) 1, SAR1a gene homolog 1 (S. cerevisiae), SARA1; GTP-binding protein SAR1a; SAR1; Sara; SAR1 gene homolog A; SAR1a gene homolog 1; COPII-associated small GTPase; SARA1; masra2;
<b>Gene ID</b>	56681
<b>mRNA Refseq</b>	NM_001142648
<b>Protein Refseq</b>	NP_001136120
<b>MIM</b>	607691
<b>UniProt ID</b>	Q9NR31

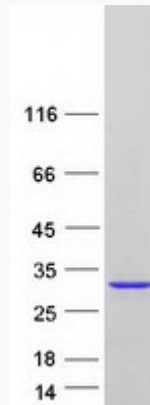
 Tel: 1-631-559-9269 1-516-512-3133

 Email: [info@creative-biomart.com](mailto:info@creative-biomart.com)  Fax: 1-631-938-8127

 45-1 Ramsey Road, Shirley, NY 11967, USA



SDS-PAGE



Tel: 1-631-559-9269 1-516-512-3133

Email: [info@creative-biomart.com](mailto:info@creative-biomart.com) Fax: 1-631-938-8127

45-1 Ramsey Road, Shirley, NY 11967, USA