

Recombinant Human SAR1A protein, His-tagged

Cat. No. SAR1A-2510H Lot. No. (See product label)

SPECIFICATION

Product Overview	Recombinant Human SAR1A protein(1-198 aa), fused with N-terminal His tag, was expressed in E.coli.
Species	Human
Source	E.coli
ProteinLength	1-198 aa
Form	The purified protein was Lyophilized from sterile PBS (58mM Na ₂ HPO ₄ , 17mM NaH ₂ PO ₄ , 68mM NaCl, pH7.4). 5 % trehalose and 5 % mannitol are added as protectant before lyophilization. The elution buffer contain 300mM imidazole.
AASequence	MSFIFEWIYNGFSSVLQFLGLYKKSGKLVFLGLDNAGKTTLLHMLKDDRLGQHVPTL HPTSEELTIAGMTFTTDFDLGGHEQARRVWKNYLPAINGIVFLVDCADHSRLVESKVE LNALMTDETISNVPILILGNKIDRTDAISEEKLREIFGLYGQTTGKGNVTLKELNARPME VFMCSVLKRQGYGEGFRWLSQYID
Purity	80%, by SDS-PAGE with Coomassie Brilliant Blue staining.
Storage	Store at 2-8°C for 1-2 weeks. Aliquot and store at -20°C to -80°C for up to 3 months, reconstitution with sterile water and addition of an equal volume of glycerol. Avoid repeat freeze-thaw cycles.
Reconstitution	Dissolve the product in 200 µl sterile water to achieve a working concentration of 0.25

 Tel: 1-631-559-9269 1-516-512-3133

 Email: info@creative-biomart.com  Fax: 1-631-938-8127

 45-1 Ramsey Road, Shirley, NY 11967, USA

g/μl. If experimental compatibility allows, mix the aqueous solution with an equal volume of glycerol (1:1 ratio) after initial reconstitution.

GENE INFORMATION

Gene Name	SAR1A SAR1 homolog A (<i>S. cerevisiae</i>) [<i>Homo sapiens</i>]
Official Symbol	SAR1A
Synonyms	SAR1A; SAR1 homolog A (<i>S. cerevisiae</i>); SAR1a gene homolog (<i>S. cerevisiae</i>) 1 , SAR1a gene homolog 1 (<i>S. cerevisiae</i>) , SARA1; GTP-binding protein SAR1a; SAR1; Sara; SAR1 gene homolog A; SAR1a gene homolog 1; COPII-associated small GTPase; SARA1; masra2;
Gene ID	56681
mRNA Refseq	NM_001142648
Protein Refseq	NP_001136120
MIM	607691
UniProt ID	Q9NR31

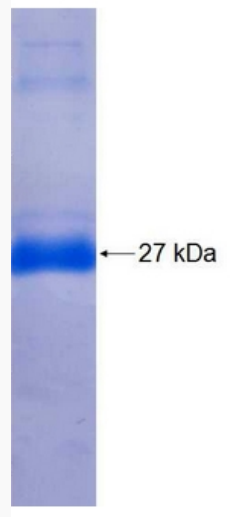
 Tel: 1-631-559-9269 1-516-512-3133

 Email: info@creative-biomart.com  Fax: 1-631-938-8127

 45-1 Ramsey Road, Shirley, NY 11967, USA



SDS-PAGE



☎ Tel: 1-631-559-9269 1-516-512-3133

☎ Email: info@creative-biomart.com ☎ Fax: 1-631-938-8127

☎ 45-1 Ramsey Road, Shirley, NY 11967, USA