

Recombinant Human SAR1B Protein, Myc/DDK-tagged, C13 and N15-labeled

Cat. No. SAR1B-3629H **Lot. No.** (See product label)

SPECIFICATION

Product Overview	SAR1B MS Standard C13 and N15-labeled recombinant protein (NP_057187) with a C-terminal MYC/DDK tag, was expressed in HEK293 cells.
Species	Human
Source	HEK293
Description	The protein encoded by this gene is a small GTPase that acts as a homodimer. The encoded protein is activated by the guanine nucleotide exchange factor PREB and is involved in protein transport from the endoplasmic reticulum to the Golgi. This protein is part of the COPII coat complex. Defects in this gene are a cause of chylomicron retention disease (CMRD), also known as Anderson disease (ANDD). Two transcript variants encoding the same protein have been found for this gene.
Molecular Mass	22.4 kDa
AA Sequence	MSFIFDWIYSGFSSVLQFLGLYKKTGKLVFLGLDNAGKTTLLHMLKDDRLGQHVPTL HPTSEELTIAGMTFTTDFDLGGHVQARRVWKNYLPAINGIVFLVDCADHERLLESKEEL DSLMTDETIANVPILILGNKIDRPEAISEERLREMFGLYGQTTGKGSISLKELNARPLE VFMCSVLKRQGYGEGFRWMAQYIDTRTRPLEQKLISEEDLAANDILDYKDDDDKV
Purity	> 80% as determined by SDS-PAGE and Coomassie blue staining
Stability	Stable for 3 months from receipt of products under proper storage and handling

 Tel: 1-631-559-9269 1-516-512-3133

 Email: info@creative-biomart.com  Fax: 1-631-938-8127

 45-1 Ramsey Road, Shirley, NY 11967, USA

conditions.

Storage Store at -80 centigrade. Avoid repeated freeze-thaw cycles.

Concentration 50 µg/mL as determined by BCA

Storage Buffer 100 mM glycine, 25 mM Tris-HCl, pH 7.3.

GENE INFORMATION

Gene Name [SAR1B secretion associated Ras related GTPase 1B \[Homo sapiens \(human\) \]](#)

Official Symbol [SAR1B](#)

Synonyms AR1B; SAR1 homolog B (S. cerevisiae); ANDD; CMRD; GTBPB; SARA2; GTP-binding protein SAR1b; 2310075M17Rik; SAR1a gene homolog 2; GTP-binding protein B; GTP-binding protein Sara; SAR1B; EC 3.6.5

Gene ID [51128](#)

mRNA Refseq [NM_016103](#)

Protein Refseq [NP_057187](#)

MIM [607690](#)

UniProt ID [Q9Y6B6](#)

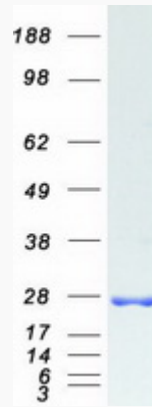
 Tel: 1-631-559-9269 1-516-512-3133

 Email: info@creative-biomart.com  Fax: 1-631-938-8127

 45-1 Ramsey Road, Shirley, NY 11967, USA



SDS-PAGE



Tel: 1-631-559-9269 1-516-512-3133

Email: info@creative-biomart.com Fax: 1-631-938-8127

45-1 Ramsey Road, Shirley, NY 11967, USA