

Recombinant Full Length Human SAT2 Protein, C-Flag-tagged

Cat. No. SAT2-2144HFL Lot. No. (See product label)

SPECIFICATION

Product Overview	Recombinant Full Length Human SAT2 Protein, fused to Flag-tag at C-terminus, was expressed in Mammalian cells.
Species	Human
Source	Mammalian Cells
Description	Enables diamine N-acetyltransferase activity and identical protein binding activity. Involved in polyamine metabolic process. Located in extracellular exosome.
Form	25 mM Tris HCl, pH 7.3, 100 mM glycine, 10% glycerol.
Molecular Mass	19 kDa
AA Sequence	MASVRIREAKEGDCGDILRLIRELAEFEKLSQVKISEEALRADGFGDNPFYHCLVAE ILPAPGKLLGPC VVGYGIIYYFIYSTWKGRTIYLEDIYVMPEYRGQGIGSKIHKVAEVA LDKGCSQFRLAVLDWNQRAMDLY KALGAQDLTEAEGWHFFCFQGEATRKLAKG T RTRPLEQKLISEEDLAANDILDYKDDDDKV
Purity	> 80% as determined by SDS-PAGE and Coomassie blue staining.
Stability	Stable for 12 months from the date of receipt of the product under proper storage and handling conditions. Avoid repeated freeze-thaw cycles.
Storage	Store at -80 centigrade.

 Tel: 1-631-559-9269 1-516-512-3133

 Email: info@creative-biomart.com  Fax: 1-631-938-8127

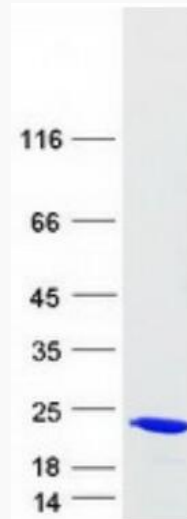
 45-1 Ramsey Road, Shirley, NY 11967, USA

Concentration	>50 ug/mL as determined by microplate BCA method.
Preparation	Recombinant protein was captured through anti-DDK affinity column followed by conventional chromatography steps.
Protein Pathways	Arginine and proline metabolism, Metabolic pathways
Full Length	Full L.
GENE INFORMATION	
Gene Name	SAT2 spermidine/spermine N1-acetyltransferase family member 2 [Homo sapiens (human)]
Official Symbol	SAT2
Synonyms	SSAT2; SSAT-2
Gene ID	112483
mRNA Refseq	NM_133491.5
Protein Refseq	NP_597998.1
MIM	611463
UniProt ID	Q96F10

 Tel: 1-631-559-9269 1-516-512-3133

 Email: info@creative-biomart.com  Fax: 1-631-938-8127

 45-1 Ramsey Road, Shirley, NY 11967, USA



Coomassie blue staining of purified SAT2 protein.

 Tel: 1-631-559-9269 1-516-512-3133

 Email: info@creative-biomart.com  Fax: 1-631-938-8127

 45-1 Ramsey Road, Shirley, NY 11967, USA