

Recombinant Human SAT2 Protein, Myc/DDK-tagged, C13 and N15-labeled

Cat. No. SAT2-4971H **Lot. No.** (See product label)

SPECIFICATION

Product Overview	SAT2 MS Standard C13 and N15-labeled recombinant protein (NP_597998) with a C-terminal MYC/DDK tag, was expressed in HEK293 cells.
Species	Human
Source	HEK293
Description	Enzyme which catalyzes the acetylation of polyamines. Substrate specificity: norspermidine > spermidine = spermine >> N(1)acetylspermine = putrescine.
Molecular Mass	19.2 kDa
AA Sequence	MASVIREAKEGDCGDILRLIRELAEFELSDQVKISEEALRADGFGDNPFYHCLVAE ILPAPGKLLGPCVVGYGIYYFIYSTWKGRTIYLEDIYVMPEYRGQGIGSKIKKVAEVAL DKGCSQFRLAVLDWNQRAMDLYKALGAQDLTEAEGWHFFCFQGEATRKLAKTRT RPLEQKLISEEDLAANDILDYKDDDDKV
Purity	> 80% as determined by SDS-PAGE and Coomassie blue staining
Stability	Stable for 3 months from receipt of products under proper storage and handling conditions.
Storage	Store at -80 centigrade. Avoid repeated freeze-thaw cycles.

 Tel: 1-631-559-9269 1-516-512-3133

 Email: info@creative-biomart.com  Fax: 1-631-938-8127

 45-1 Ramsey Road, Shirley, NY 11967, USA

Concentration 50 µg/mL as determined by BCA

Storage Buffer 100 mM glycine, 25 mM Tris-HCl, pH 7.3.

GENE INFORMATION

Gene Name SAT2 spermidine/spermine N1-acetyltransferase family member 2 [Homo sapiens (human)]

Official Symbol SAT2

Synonyms SAT2; spermidine/spermine N1-acetyltransferase family member 2; spermidine/spermine N1 acetyltransferase 2; diamine acetyltransferase 2; diamine N-acetyltransferase 2; SSAT2; diamine N-acetyltransferase 2; polyamine N-acetyltransferase 2; thialysine N-epsilon-acetyltransferase; spermidine/spermine N1-acetyltransferase 2; spermidine/spermine N(1)-acetyltransferase 2;

Gene ID 112483

mRNA Refseq NM_133491

Protein Refseq NP_597998

MIM 611463

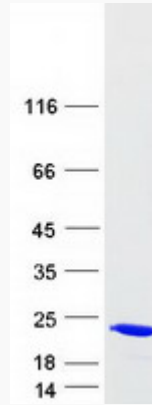
UniProt ID Q96F10

 Tel: 1-631-559-9269 1-516-512-3133

 Email: info@creative-biomart.com  Fax: 1-631-938-8127

 45-1 Ramsey Road, Shirley, NY 11967, USA

SDS-PAGE



 Tel: 1-631-559-9269 1-516-512-3133

 Email: info@creative-biomart.com  Fax: 1-631-938-8127

 45-1 Ramsey Road, Shirley, NY 11967, USA