

## Recombinant Human SBDS protein, His-tagged

Cat. No. SBDS-2544H Lot. No. (See product label)

### SPECIFICATION

<b>Product Overview</b>	Recombinant Human SBDS protein(Q9Y3A5)(265aa), fused with N-terminal His tag, was expressed in E. coli.
<b>Species</b>	Human
<b>Source</b>	E.coli
<b>Protein Length</b>	265aa(including fusion tag)
<b>Tag</b>	N-His
<b>Form</b>	20mM Tris.Cl, 50mM NaCl, 50% Glycerol, pH8.0.
<b>Molecular Mass</b>	30.7kDa(including fusion tag)
<b>Storage</b>	Store at -80°C and avoid repeated freeze-thaw cycles.
<b>Reconstitution</b>	It is recommended that sterile water be added to the vial to prepare a stock solution of 0.2 ug/ul. Centrifuge the vial at 4°C before opening to recover the entire contents.

### GENE INFORMATION

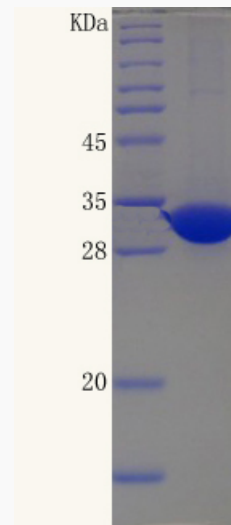
<b>Gene Name</b>	SBDS Shwachman-Bodian-Diamond syndrome [ Homo sapiens ]
<b>Official Symbol</b>	SBDS

 Tel: 1-631-559-9269 1-516-512-3133

 Email: [info@creative-biomart.com](mailto:info@creative-biomart.com)  Fax: 1-631-938-8127

 45-1 Ramsey Road, Shirley, NY 11967, USA

<b>Synonyms</b>	SBDS; Shwachman-Bodian-Diamond syndrome; ribosome maturation protein SBDS; CGI 97; FLJ10917; SDS; SWDS; CGI-97;
<b>Gene ID</b>	51119
<b>mRNA Refseq</b>	NM_016038
<b>Protein Refseq</b>	NP_057122
<b>MIM</b>	607444
<b>UniProt ID</b>	Q9Y3A5

**SDS-PAGE**

 Tel: 1-631-559-9269 1-516-512-3133

 Email: [info@creative-biomart.com](mailto:info@creative-biomart.com)  Fax: 1-631-938-8127

 45-1 Ramsey Road, Shirley, NY 11967, USA