

# Recombinant Human SBK1 Protein, Myc/DDK-tagged, C13 and N15-labeled

**Cat. No.** SBK1-5285H    **Lot. No.** (See product label)

## SPECIFICATION

<b>Product Overview</b>	SBK1 MS Standard C13 and N15-labeled recombinant protein (NP_001019572) with a C-terminal MYC/DDK tag, was expressed in HEK293 cells.
<b>Species</b>	Human
<b>Source</b>	HEK293
<b>Description</b>	SBK1 (SH3 Domain Binding Kinase 1) is a Protein Coding gene. Diseases associated with SBK1 include Punctate Epithelial Keratoconjunctivitis and Corneal Ectasia. Gene Ontology (GO) annotations related to this gene include transferase activity, transferring phosphorus-containing groups and protein tyrosine kinase activity. An important paralog of this gene is SBK3.
<b>Molecular Mass</b>	46.1 kDa
<b>AA Sequence</b>	MSVGCPEPEPPRSLTCCGPGTAPGPGAGVPLLTEDMQALTLRRLAASDVTKHYELV RELGKGTYGKVDLVVYKGTGTMALKFVNKSKTKLKNFLREVSITNSLSSSPFIKVF DVVFETEDCYVFAQEYAPAGDLFDIIPPQVGLPEDTVKRCVQQLGLALDFMHGRQLV HRDIKPENVLLFDRECRVVKLADFGMTRRVGCRVKRVSGTIPYTAPEVCQAGRADG LAVDTGVDVWAFGLIFCVLTGNFPWEAASGADAFFEEFVRWQRGRLPGLPSQWR RFTEPALRMFQRLLALEPERRGPAKEVFRFLKHELTSELRRRPSHRARKPPGDRPP AAGPLRLEAPGLKRTVLTESGSGSRPAPPAVGSVPLPVPVVPVVPVVPVPEPGL APQGPPGRTDGRADKSKGQVVLATAIEICVTRTRPLEQKLISEEDLAANDILDYKDDD

 Tel: 1-631-559-9269    1-516-512-3133

 Email: [info@creative-biomart.com](mailto:info@creative-biomart.com)     Fax: 1-631-938-8127

 45-1 Ramsey Road, Shirley, NY 11967, USA

	DKV
<b>Purity</b>	> 80% as determined by SDS-PAGE and Coomassie blue staining
<b>Stability</b>	Stable for 3 months from receipt of products under proper storage and handling conditions.
<b>Storage</b>	Store at -80 centigrade. Avoid repeated freeze-thaw cycles.
<b>Concentration</b>	50 µg/mL as determined by BCA
<b>Storage Buffer</b>	100 mM glycine, 25 mM Tris-HCl, pH 7.3.

## GENE INFORMATION

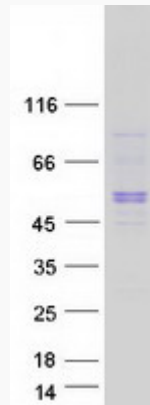
<b>Gene Name</b>	SBK1 SH3-binding domain kinase 1 [ Homo sapiens (human) ]
<b>Official Symbol</b>	SBK1
<b>Synonyms</b>	SBK1; SH3-binding domain kinase 1; serine/threonine-protein kinase SBK1; Sbk; SH3-binding kinase 1;
<b>Gene ID</b>	388228
<b>mRNA Refseq</b>	NM_001024401
<b>Protein Refseq</b>	NP_001019572
<b>UniProt ID</b>	Q52WX2

 Tel: 1-631-559-9269 1-516-512-3133

 Email: [info@creative-biomart.com](mailto:info@creative-biomart.com)  Fax: 1-631-938-8127

 45-1 Ramsey Road, Shirley, NY 11967, USA

**SDS-PAGE**



 Tel: 1-631-559-9269 1-516-512-3133

 Email: [info@creative-biomart.com](mailto:info@creative-biomart.com)  Fax: 1-631-938-8127

 45-1 Ramsey Road, Shirley, NY 11967, USA