

# Recombinant Human SCAMP1 Protein, Myc/DDK-tagged, C13 and N15-labeled

Cat. No. SCAMP1-5287H Lot. No. (See product label)

## SPECIFICATION

<b>Product Overview</b>	SCAMP1 MS Standard C13 and N15-labeled recombinant protein (NP_004857) with a C-terminal MYC/DDK tag, was expressed in HEK293 cells.
<b>Species</b>	Human
<b>Source</b>	HEK293
<b>Description</b>	This gene product belongs to the SCAMP family of proteins, which are secretory carrier membrane proteins. They function as carriers to the cell surface in post-golgi recycling pathways. Different family members are highly related products of distinct genes, and are usually expressed together. These findings suggest that these protein family members may function at the same site during vesicular transport rather than in separate pathways. A pseudogene of this gene has been defined on chromosome 1. Alternative splicing results in multiple transcript variants.
<b>Molecular Mass</b>	37.9 kDa
<b>AA Sequence</b>	MSDFDSNPFADPDLNNPFKDPSTVQVTRNVPPGLDEYNPFSDSRTPPPGGVKMPN VPNTQPAIMKPTEEHPAYTQIAKEHALAQAELLKRQEELERKAAELDRREREMQNLS QHGRKNNWPPLPSNFPVGPFCFYQDFSVDIPVEFQKTVKLMYYLWMFHAVTLFLNIF GCLAWFCVDSARAVDFGLSILWFLFTPCSFVCWYRPLYGAFRSDSSFRFFVFFVY ICQFAVHVLQAAGFHNWGNCGWISSLTGLNQNIPVGIMMIIIAALFTASAVISLVMFKK VHGLYRTTGASFEKAQQEFATGVMSNKTVQTAANAASTAASSAAQNAFKGNQITR

Tel: 1-631-559-9269 1-516-512-3133

Email: [info@creative-biomart.com](mailto:info@creative-biomart.com) Fax: 1-631-938-8127

45-1 Ramsey Road, Shirley, NY 11967, USA

TRPLEQKLISEEDLAANDILDYKDDDDKV

**Purity** > 80% as determined by SDS-PAGE and Coomassie blue staining

**Stability** Stable for 3 months from receipt of products under proper storage and handling conditions.

**Storage** Store at -80 centigrade. Avoid repeated freeze-thaw cycles.

**Concentration** 50 µg/mL as determined by BCA

**Storage Buffer** 100 mM glycine, 25 mM Tris-HCl, pH 7.3.

## GENE INFORMATION

**Gene Name** [SCAMP1 secretory carrier membrane protein 1 \[ Homo sapiens \(human\) \]](#)

**Official Symbol** [SCAMP1](#)

**Synonyms** SCAMP1; secretory carrier membrane protein 1; secretory carrier-associated membrane protein 1; SCAMP37; SCAMP;

**Gene ID** [9522](#)

**mRNA Refseq** [NM\\_004866](#)

**Protein Refseq** [NP\\_004857](#)

**MIM** [606911](#)

**UniProt ID** [O15126](#)

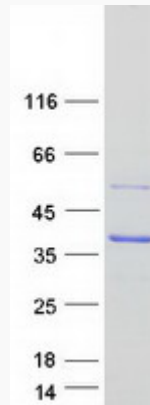
 Tel: 1-631-559-9269 1-516-512-3133

 Email: [info@creative-biomart.com](mailto:info@creative-biomart.com)  Fax: 1-631-938-8127

 45-1 Ramsey Road, Shirley, NY 11967, USA



SDS-PAGE



Tel: 1-631-559-9269 1-516-512-3133

Email: [info@creative-biomart.com](mailto:info@creative-biomart.com) Fax: 1-631-938-8127

45-1 Ramsey Road, Shirley, NY 11967, USA