

# Recombinant Human SCARB1 Protein, MYC/DDK-tagged, C13 and N15-labeled

Cat. No. SCARB1-138H Lot. No. (See product label)

## SPECIFICATION

### Product Overview

SCARB1 MS Standard C13 and N15-labeled recombinant protein (NP\_001076428) with a C-terminal MYC/DDK tag, was expressed in HEK293 cells.

### Species

Human

### Source

HEK293

### Description

The protein encoded by this gene is a plasma membrane receptor for high density lipoprotein cholesterol (HDL). The encoded protein mediates cholesterol transfer to and from HDL. In addition, this protein is a receptor for hepatitis C virus glycoprotein E2. Several transcript variants encoding different isoforms have been found for this gene.

### Molecular Mass

56 kDa

### AA Sequence

MGCSAKARWAAGALGVAGLLCAVLGAVMIVMVPSLIKQQVLKNVRIDPSSLSFNMW  
KEIPIPFYLSVYFFDVMNPSEILKGEKPQVRERGPYVYREFRHKSNITFNNNDTVSFL  
EYRTFQFQPSKSHGSESDYIVMPNILVLGAAVMENKPMTLKLIMTLAFTTLGERAF  
MNRVGEIMWGYKDPLVNLINKYFPGMFPFKDKFGLFAELNNSDGLFTVFTGVQNI  
SRIHLVDKWNGLSKVDFWHSQCNMINGSQMWPPFMTPESSLEFYSPACRSM  
KLMYKESGVFEGIPTYRFVAPKTLFANGSIYPPNEGFCPCLESGIQNVSTCRFSAPLF  
LSHPHFLNADPVLAEAVTGLHPNQEASLFLDIHPVTGIPMNCSVKLQLSLYMKSVA  
GIGQTGKIEPVVPLLLWFAESGAMEGETLHTFYTQLVLMPKVMHYAQYVLLALGCVL

 Tel: 1-631-559-9269 1-516-512-3133

 Email: [info@creative-biomart.com](mailto:info@creative-biomart.com)  Fax: 1-631-938-8127

 45-1 Ramsey Road, Shirley, NY 11967, USA

LLVPVICQIRSQGPEDTVSQPGLAAGPDRPPSPYTPLLPDSPSGQPPSPTATRTRPL  
EQKLISEEDLAANDILDYKDDDDKV

**Purity** > 80% as determined by SDS-PAGE and Coomassie blue staining

**Stability** Stable for 3 months from receipt of products under proper storage and handling conditions.

**Storage** Store at -80 centigrade. Avoid repeated freeze-thaw cycles.

**Concentration** 50 µg/mL as determined by BCA

**Storage Buffer** 100 mM glycine, 25 mM Tris-HCl, pH 7.3.

## GENE INFORMATION

**Gene Name** [SCARB1 scavenger receptor class B member 1 \[ Homo sapiens \(human\) \]](#)

**Official Symbol** [SCARB1](#)

**Synonyms** SCARB1; scavenger receptor class B member 1; CD36L1; CLA-1; CLA1; HDLQTL6; SR-BI; SRB1; scavenger receptor class B member 1; CD36 and LIMPII analogous 1; CD36 antigen (collagen type I receptor, thrombospondin receptor)-like 1; scavenger receptor class B type III

**Gene ID** [949](#)

**mRNA Refseq** [NM\\_001082959](#)

**Protein Refseq** [NP\\_001076428](#)

 Tel: 1-631-559-9269 1-516-512-3133

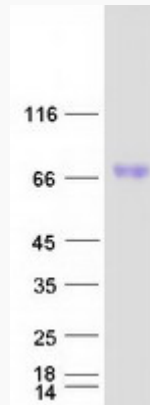
 Email: [info@creative-biomart.com](mailto:info@creative-biomart.com)  Fax: 1-631-938-8127

 45-1 Ramsey Road, Shirley, NY 11967, USA

**MIM** 601040

**UniProt ID** Q8WTV0

**SDS-PAGE**



 Tel: 1-631-559-9269 1-516-512-3133

 Email: [info@creative-biomart.com](mailto:info@creative-biomart.com)  Fax: 1-631-938-8127

 45-1 Ramsey Road, Shirley, NY 11967, USA