

Recombinant Human SCARB1 protein, Fc-tagged

Cat. No. SCARB1-322H Lot. No. (See product label)

SPECIFICATION

Product Overview Recombinant Human SCARB1 protein (Pro33-Tyr443), fused to human IgG1 Fc tag at C-terminus, was expressed in human 293 cells (HEK293).

Species Human

Source HEK293

ProteinLength 411

Description Scavenger receptor class B member 1 (SRB1) is also known as SR-BI, CD36 and LIMPII analogous 1 (CD36L1), CLA-1, is a member of the scavenger receptor family or CD36 family. CD36L1 is an integral membrane protein found in numerous cell types/tissues, including the liver and adrenal. SRB1 is receptor for different ligands such as phospholipids, cholesterol ester, lipoproteins, phosphatidylserine and apoptotic cells. CLA-1 facilitates the flux of free and esterified cholesterol between the cell surface and extracellular donors and acceptors, such as high-density lipoprotein (HDL) and to a lesser extent, apoB-containing lipoproteins and modified lipoproteins. SCARB1 is, along with CD81, the receptor for the entry of the Hepatitis C virus glycoprotein E2 in liver cells, and binding between SCARB1 and E2 was found to be independent of the genotype of the viral isolate. SRB1 plays an important role in the uptake of HDL cholesteryl ester.

Form Lyophilized from 0.22 um filtered solution in 50 mM Tris, 100 mM Glycine, pH7.5, 10% trehalose.

 Tel: 1-631-559-9269 1-516-512-3133

 Email: info@creative-biomart.com  Fax: 1-631-938-8127

 45-1 Ramsey Road, Shirley, NY 11967, USA

Molecular Mass	The protein has a calculated MW of 72.6 kDa. As a result of glycosylation, the protein migrates as 110-115 kDa under reducing (R) condition, and 220-230 kDa under non-reducing (NR) condition (SDS-PAGE).
Endotoxin	Less than 1.0 EU per ug by the LAL method.
Purity	>95% as determined by SDS-PAGE.
Storage	For long term storage, the product should be stored at lyophilized state at -20 centigrade or lower. Please avoid repeated freeze-thaw cycles. This product is stable after storage at: -20 centigrade to -70 centigrade for 12 months in lyophilized state; -70 centigrade for 3 months under sterile conditions after reconstitution.
Reconstitution	It is recommended that sterile water be added to the vial to prepare a stock solution of 0.2 ug/ul. Centrifuge the vial at 4°C before opening to recover the entire contents.

GENE INFORMATION

Gene Name	SCARB1
Official Symbol	SCARB1
Synonyms	SCARB1; scavenger receptor class B, member 1; CD36 antigen (collagen type I receptor, thrombospondin receptor) like 1 , CD36L1; scavenger receptor class B member 1; CLA 1; CLA1; SR BI; SRB1; CD36 and LIMPII analogous 1; scavenger receptor class B type III; CD36 antigen (collagen type I receptor, thrombospondin receptor)-like 1; CLA-1; SR-BI; CD36L1; HDLQTL6; MGC138242
Gene ID	949

 Tel: 1-631-559-9269 1-516-512-3133

 Email: info@creative-biomart.com  Fax: 1-631-938-8127

 45-1 Ramsey Road, Shirley, NY 11967, USA

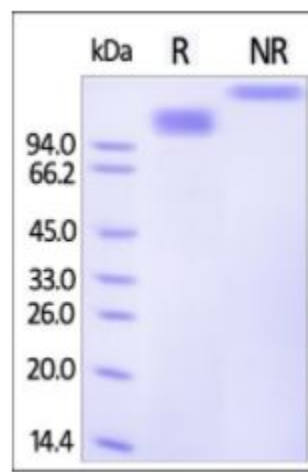
mRNA Refseq [NM_001082959](#)

Protein Refseq [NP_001076428](#)

MIM [601040](#)

UniProt ID [Q8WTV0](#)

**SDS-PAGE of
SCARB1-322H**



Human SCARB1, Fc Tag on SDS-PAGE under reducing (R) and non-reducing (NR) conditions. The gel was stained overnight with Coomassie Blue. The purity of the protein is greater than 95%.

 Tel: 1-631-559-9269 1-516-512-3133

 Email: info@creative-biomart.com  Fax: 1-631-938-8127

 45-1 Ramsey Road, Shirley, NY 11967, USA