

## Recombinant Human SCARB2 protein, GST-tagged

Cat. No. SCARB2-1755H Lot. No. (See product label)

### SPECIFICATION

<b>Product Overview</b>	Recombinant Human SCARB2 protein(1 - 300 aa), fused with N-terminal GST tag, was expressed in E. coli.
<b>Species</b>	Human
<b>Source</b>	E.coli
<b>ProteinLength</b>	1 - 300 aa
<b>Form</b>	The purified protein was Lyophilized from sterile PBS (58mM Na <sub>2</sub> HPO <sub>4</sub> , 17mM NaH <sub>2</sub> PO <sub>4</sub> , 68mM NaCl, pH8.). 5 % trehalose and 5 % mannitol are added as protectant before lyophilization. The elution buffer contain 100mM GSH.
<b>Storage</b>	Short-term storage: Store at 2-8°C for (1-2 weeks). Long-term storage: Aliquot and store at -20°C to -80°C for up to 3 months, reconstitution with sterile water and addition of an equal volume of glycerol. Avoid repeat freeze-thaw cycles.
<b>Purity</b>	90%, by SDS-PAGE with Coomassie Brilliant Blue staining.

### GENE INFORMATION

<b>Official Symbol</b>	<a href="#">SCARB2</a>
<b>Synonyms</b>	SCARB2; scavenger receptor class B, member 2; CD36 antigen (collagen type I receptor, thrombospondin receptor) like 2 (lysosomal integral membrane protein II) ,

 Tel: 1-631-559-9269 1-516-512-3133

 Email: [info@creative-biomart.com](mailto:info@creative-biomart.com)  Fax: 1-631-938-8127

 45-1 Ramsey Road, Shirley, NY 11967, USA

CD36L2; lysosome membrane protein 2; HLGP85; LIMP 2; LIMPII; SR BII; LIMP II; CD36 antigen-like 2; lysosome membrane protein II; 85 kDa lysosomal membrane sialoglycoprotein; 85 kDa lysosomal sialoglycoprotein scavenger receptor class B, member 2; CD36 antigen (collagen type I receptor, thrombospondin receptor)-like 2 (lysosomal integral membrane protein II); AMRF; EPM4; LGP85; CD36L2; LIMP-2; SR-BII;

**Gene ID** [950](#)

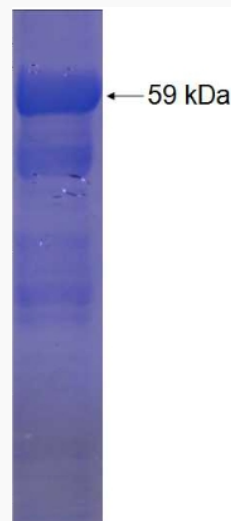
**mRNA Refseq** [NM\\_001204255](#)

**Protein Refseq** [NP\\_001191184](#)

**MIM** [602257](#)

**UniProt ID** [Q14108](#)

**SDS-PAGE**



 Tel: 1-631-559-9269 1-516-512-3133

 Email: [info@creative-biomart.com](mailto:info@creative-biomart.com)  Fax: 1-631-938-8127

 45-1 Ramsey Road, Shirley, NY 11967, USA