

Recombinant Human SCARB2 Protein (Arg27-Thr432), C-His tagged

Cat. No. SCARB2-6708H Lot. No. (See product label)

SPECIFICATION

| | |
|-------------------------|---|
| Product Overview | Recombinant human SCARB2 (Arg27-Thr432) fused with the C-terminal His tag was expressed in mammalian cells. |
| Species | Human |
| Source | Mammalian Cells |
| ProteinLength | Arg27-Thr432 |
| Form | Lyophilized powder/frozen liquid |
| Molecular Mass | 44.66 kDa |
| Purity | > 90 % as determined by SDS-PAGE |
| Notes | For research use only. |
| Storage | Use a manual defrost freezer and avoid repeated freeze thaw cycles. Store at 2 to 8 centigrade for one week. Store at -20 to -80 centigrade for twelve months from the date of receipt. |
| Storage Buffer | Supplied as solution form in PBS or lyophilized from PBS. |
| Reconstitution | Reconstitute in sterile water for a stock solution. |

 Tel: 1-631-559-9269 1-516-512-3133

 Email: info@creative-biomart.com  Fax: 1-631-938-8127

 45-1 Ramsey Road, Shirley, NY 11967, USA

Shipping They are shipped out with dry ice/blue ice unless customers require otherwise.

GENE INFORMATION

Gene Name [SCARB2 scavenger receptor class B, member 2 \[Homo sapiens \(human\) \]](#)

Official Symbol [SCARB2](#)

Synonyms

SCARB2; scavenger receptor class B, member 2; CD36 antigen (collagen type I receptor, thrombospondin receptor) like 2 (lysosomal integral membrane protein II), CD36L2; lysosome membrane protein 2; HLGP85; LIMP 2; LIMPII; SR BII; LIMP II; CD36 antigen-like 2; lysosome membrane protein II; 85 kDa lysosomal membrane sialoglycoprotein; 85 kDa lysosomal sialoglycoprotein scavenger receptor class B, member 2; CD36 antigen (collagen type I receptor, thrombospondin receptor)-like 2 (lysosomal integral membrane protein II); AMRF; EPM4; LGP85; CD36L2; LIMP-2; SR-BII;

Gene ID [950](#)

mRNA Refseq [NM_001204255](#)

Protein Refseq [NP_001191184](#)

MIM [602257](#)

UniProt ID [Q14108](#)

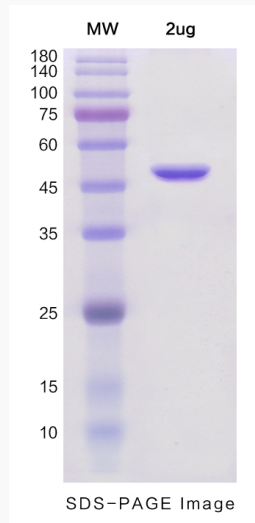
 Tel: 1-631-559-9269 1-516-512-3133

 Email: info@creative-biomart.com  Fax: 1-631-938-8127

 45-1 Ramsey Road, Shirley, NY 11967, USA



SDS-PAGE



Tel: 1-631-559-9269 1-516-512-3133

Email: info@creative-biomart.com Fax: 1-631-938-8127

45-1 Ramsey Road, Shirley, NY 11967, USA