

# Recombinant Human SCCPDH Protein, Myc/DDK-tagged, C13 and N15-labeled

Cat. No. SCCPDH-2796H Lot. No. (See product label)

## SPECIFICATION

### Product Overview

SCCPDH MS Standard C13 and N15-labeled recombinant protein (NP\_057086) with a C-terminal MYC/DDK tag, was expressed in HEK293 cells.

### Species

Human

### Source

HEK293

### Description

SCCPDH (Saccharopine Dehydrogenase (Putative)) is a Protein Coding gene. Diseases associated with SCCPDH include Hyperlysinemia, Type I and L-2-Hydroxyglutaric Aciduria. Among its related pathways are Response to elevated platelet cytosolic Ca<sup>2+</sup>. Gene Ontology (GO) annotations related to this gene include oxidoreductase activity.

### Molecular Mass

47.2 kDa

### AA Sequence

MATEQRPFHLVVFGASGFTGQFVTEEVAREQVDPERSSRLPWAVAGRSREKLQRV  
LEKAALKLGRPTLSSEVGIIICDIANPASLDEMAKQATVVLNCVGPYRFYGEPIKACI  
ENGASCIDISGEPQFLELMQLKYHEKAADKGVYIIGSSGFDSPADLGVYTRNKMNG  
TLTAVESFLTIHSGHEGLSIHDGTWKSAYGFGDQSNLRKLRNVSNLKPVPLIGPKLK  
RRWPISYCRELKGYSIPFMGSDVSVVRRRTQRYLYENLEESPVQYAAAYVTVGGITSVI  
KLMFAGLFFLFFVRFGIGRQLLIKFPWFFSFGYFSKQGPTQKQIDAASFTLTFFGQGY  
SRGTGTDKNKPNIKICTQVKGPEAGYVATPIAMVQAAMTLLSDASHLPKAGGVFTPG  
AAFSKTKLIDRLNKHGIEFSVISSEVTRTRPLEQKLISEEDLAANDILDYKDDDDKV

 Tel: 1-631-559-9269 1-516-512-3133

 Email: [info@creative-biomart.com](mailto:info@creative-biomart.com)  Fax: 1-631-938-8127

 45-1 Ramsey Road, Shirley, NY 11967, USA

<b>Purity</b>	> 80% as determined by SDS-PAGE and Coomassie blue staining
<b>Stability</b>	Stable for 3 months from receipt of products under proper storage and handling conditions.
<b>Storage</b>	Store at -80 centigrade. Avoid repeated freeze-thaw cycles.
<b>Concentration</b>	50 µg/mL as determined by BCA
<b>Storage Buffer</b>	100 mM glycine, 25 mM Tris-HCl, pH 7.3.

## GENE INFORMATION

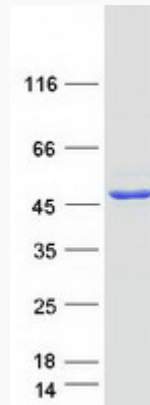
<b>Gene Name</b>	SCCPDH saccharopine dehydrogenase (putative) [ Homo sapiens (human) ]
<b>Official Symbol</b>	SCCPDH
<b>Synonyms</b>	SCCPDH; saccharopine dehydrogenase (putative); saccharopine dehydrogenase-like oxidoreductase; CGI 49; NET11; probable saccharopine dehydrogenase; CGI-49; FLJ43187; RP11-439E19.2;
<b>Gene ID</b>	51097
<b>mRNA Refseq</b>	NM_016002
<b>Protein Refseq</b>	NP_057086
<b>UniProt ID</b>	Q8NBX0

 Tel: 1-631-559-9269 1-516-512-3133

 Email: [info@creative-biomart.com](mailto:info@creative-biomart.com)  Fax: 1-631-938-8127

 45-1 Ramsey Road, Shirley, NY 11967, USA

**SDS-PAGE**



 Tel: 1-631-559-9269 1-516-512-3133

 Email: [info@creative-biomart.com](mailto:info@creative-biomart.com)  Fax: 1-631-938-8127

 45-1 Ramsey Road, Shirley, NY 11967, USA