

Recombinant Human SCFD1 protein, His-tagged

Cat. No. SCFD1-019H Lot. No. (See product label)

SPECIFICATION

Product Overview	Recombinant Human SCFD1 protein(NP_001244305)(342-642 aa), fused to His tag, was expressed in E. coli.
Species	Human
Source	E.coli
ProteinLength	342-642 aa
Form	The purified protein was Lyophilized from sterile PBS (58mM Na ₂ HPO ₄ , 17mM NaH ₂ PO ₄ , 68mM NaCl, pH7.). 5 % trehalose and 5 % mannitol are added as protectants before lyophilization.
AA Sequence	<p>QQELESYRAQEDEVKRLKSIMGLEGEDEGAISMLSDNTAKLTSAVSSLPELLEKKRLI DLHTNVATAVLEHIKARKLDVYFEYEEKIMSKTTLDKSLLDIISDPDAGTPEDKMRLFLI YYISTQQAPSEADLEQYKKALTDAGCNLNPLQYIKQWKAFTKMASAPASYGSTTTKP MGLLSRVMNTGSQFVMEGVKNLVLKQQNLPVTRILDNLMEMKSNPETDDYRYFDP KMLRGNDSSVPRNKNPFQEAIVFVGGGNYIEYQNLVDYIKGKQGKHILYGCSELFN ATQFIKQLSQLGQK</p>
Purity	95%, by SDS-PAGE with Coomassie Brilliant Blue staining.
Storage	<p>Short-term storage: Store at 2-8°C for (1-2 weeks).</p> <p>Long-term storage: Aliquot and store at -20°C to -80°C for up to 3 months, buffer containing 50% glycerol is recommended for reconstitution. Avoid repeat freeze-thaw</p>

 Tel: 1-631-559-9269 1-516-512-3133

 Email: info@creative-biomart.com  Fax: 1-631-938-8127

 45-1 Ramsey Road, Shirley, NY 11967, USA

cycles.

Reconstitution

Reconstitute at 0.25 g/μl in 200 μl sterile water for short-term storage.
 Reconstitution with 200 μl 50% glycerol solution is recommended for longer term storage (see Stability and Storage for more details).
 If a different concentration is needed for your purposes please adjust the reconstitution volume as required (please note: the ion concentration of the final solution will vary according to the volume used).
 Note: Centrifuge vial before opening. When reconstituting, gently pipet and wash down the sides of the vial to ensure full recovery of the protein into solution.

GENE INFORMATION

Gene Name [SCFD1 sec1 family domain containing 1 \[Homo sapiens \]](#)

Official Symbol [SCFD1](#)

Synonyms

SCFD1; sec1 family domain containing 1; C14orf163, chromosome 14 open reading frame 163; sec1 family domain-containing protein 1; KIAA0917; RA410; SLY1; STXBP1L2; SLY1 homolog; syntaxin-binding protein 1-like 2; vesicle transport-related protein; SLY1P; C14orf163;

Gene ID [23256](#)

mRNA Refseq [NM_001257376](#)

Protein Refseq [NP_001244305](#)

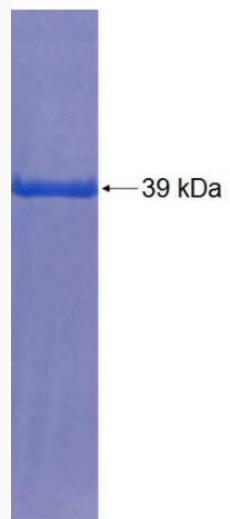
UniProt ID [Q8WVM8](#)

 Tel: 1-631-559-9269 1-516-512-3133

 Email: info@creative-biomart.com  Fax: 1-631-938-8127

 45-1 Ramsey Road, Shirley, NY 11967, USA

SDS-PAGE



 Tel: 1-631-559-9269 1-516-512-3133

 Email: info@creative-biomart.com  Fax: 1-631-938-8127

 45-1 Ramsey Road, Shirley, NY 11967, USA