

# Active Recombinant Full Length Human SCG2 Protein, C-Flag-tagged

Cat. No. SCG2-485HFL    Lot. No. (See product label)

## SPECIFICATION

<b>Product Overview</b>	Recombinant Full Length Human SCG2 Protein, fused to Flag-tag at C-terminus, was expressed in Mammalian cells.
<b>Species</b>	Human
<b>Source</b>	Mammalian Cells
<b>Description</b>	The protein encoded by this gene is a member of the chromogranin/secretogranin family of neuroendocrine secretory proteins. Studies in rodents suggest that the full-length protein, secretogranin II, is involved in the packaging or sorting of peptide hormones and neuropeptides into secretory vesicles. The full-length protein is cleaved to produce the active peptide secretoneurin, which exerts chemotaxic effects on specific cell types, and EM66, whose function is unknown.
<b>Form</b>	25 mM Tris HCl, pH 7.3, 100 mM glycine, 10% glycerol.
<b>Bio-activity</b>	Cell treatment
<b>Molecular Mass</b>	70.8 kDa
<b>AA Sequence</b>	MAEAKTHWLGAALSLIPLIFLISGAEAAASFQRNQLLQKEPDLRLENVQKFPSPMIRALEYIENLRQQAH KEESPDPYNPYQGVSVP LQQKENGDESHLPERDSLSEEDWMRIILEALRQAENEPQSAPKENKPYALNSE KNFPMDSDDYETQQWPERKCLKHMQFPPMYEENSRDNPFKRTNEIVEEQYTPQSLATLESV FQELGKLTG PNNQKRERMDEEQ

 Tel: 1-631-559-9269    1-516-512-3133

 Email: [info@creative-biomart.com](mailto:info@creative-biomart.com)     Fax: 1-631-938-8127

 45-1 Ramsey Road, Shirley, NY 11967, USA

KLYTDEDDIYKANNIAYEDVVGGEDWNPVEEKIESQTQEEVRDSKENIEKNEQIND  
 EMKRSGQLGIQEEGLRKESKDQLSDDVSKVIAYLKRLVNAAGSGRLQNGQNGERAT  
 RLFEKPLDSQSIYQ LIEISRNLIQIPPEDLIEMLKTGEKPNGSVEPERELDLPVLDLDDIS  
 EADLDHPDLFQNRMLSKSGYPKTPG GAGTEALPDGLSVEDILNLLGMESAAANQKTS  
 YFPNPYNQEKVLPRLPYGAGRSRSNQLPKAAWIPHVENR QMAYENLNDKDQELGE  
 YLARMLVKYPEIINSNQVKRVPGQGSSEGLQEEEQIEQAIKEHLNQGSSQETD  
 KLAPVSKRFPVGPKNDDTPNRQYWDEDLLMKVLEYLNQEKAKEKGREHIAKRAM  
 NMTRTRPLEQKLISEEDLAANDILDYKDDDDKV

<b>Purity</b>	> 80% as determined by SDS-PAGE and Coomassie blue staining.
<b>Stability</b>	Stable for 12 months from the date of receipt of the product under proper storage and handling conditions. Avoid repeated freeze-thaw cycles.
<b>Storage</b>	Store at -80 centigrade.
<b>Concentration</b>	>50 ug/mL as determined by microplate BCA method.
<b>Preparation</b>	Recombinant protein was captured through anti-DDK affinity column followed by conventional chromatography steps.
<b>Protein Families</b>	Secreted Protein, Transmembrane
<b>Full Length</b>	Full L.

## GENE INFORMATION

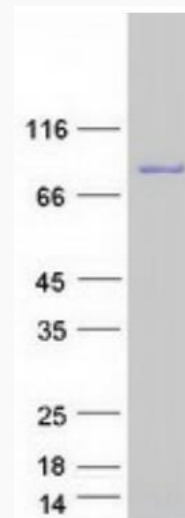
<b>Gene Name</b>	SCG2 secretogranin II [ Homo sapiens (human) ]
<b>Official Symbol</b>	SCG2

 Tel: 1-631-559-9269 1-516-512-3133

 Email: [info@creative-biomart.com](mailto:info@creative-biomart.com)  Fax: 1-631-938-8127

 45-1 Ramsey Road, Shirley, NY 11967, USA

<b>Synonyms</b>	SN; CHGC; EM66; SgII
<b>Gene ID</b>	7857
<b>mRNA Refseq</b>	NM_003469.5
<b>Protein Refseq</b>	NP_003460.2
<b>MIM</b>	118930
<b>UniProt ID</b>	P13521



Coomassie blue staining of purified SCG2 protein.

 Tel: 1-631-559-9269 1-516-512-3133

 Email: [info@creative-biomart.com](mailto:info@creative-biomart.com)  Fax: 1-631-938-8127

 45-1 Ramsey Road, Shirley, NY 11967, USA