

# Recombinant Human SCG5 Protein, Myc/DDK-tagged, C13 and N15-labeled

**Cat. No.** SCG5-4120H    **Lot. No.** (See product label)

## SPECIFICATION

<b>Product Overview</b>	SCG5 MS Standard C13 and N15-labeled recombinant protein (NP_003011) with a C-terminal MYC/DDK tag, was expressed in HEK293 cells.
<b>Species</b>	Human
<b>Source</b>	HEK293
<b>Description</b>	This gene encodes a secreted chaperone protein that prevents the aggregation of other secreted proteins, including proteins that are associated with neurodegenerative and metabolic disease. The encoded protein may be best known for its role in the trafficking and activation of prohormone convertase PC2 (encoded by Gene ID: 5126). Phosphorylation of the encoded protein has been shown to have an inhibitory effect on its chaperone function. This gene also produces a ARHGAP11A-SCG5 readthrough transcript and ARHGAP11A-SCG5 protein.
<b>Molecular Mass</b>	23.7 kDa
<b>AA Sequence</b>	MVSRMVSTMLSGLLFWLASGWTPAFAYSPRTPDRVSEADIQRLLHGVMEQLGIARP RVEYPAHQAMNLVGPQSIEGGAHEGLQHLGPFGNIPNIVAELTGDNIPKDFSEDQGY PDPPNPCPVGKTDDGCLENTPDTAEFSREFQLHQHLFDPEHDYPGLGKWNKKLLY EKMKGGERRKRRSVNPYLQGQRLDNVVAKKSVPHFSDKDPETRTRPLEQKLISE EDLAANDILDYKDDDDKV
<b>Purity</b>	> 80% as determined by SDS-PAGE and Coomassie blue staining

 Tel: 1-631-559-9269    1-516-512-3133

 Email: [info@creative-biomart.com](mailto:info@creative-biomart.com)     Fax: 1-631-938-8127

 45-1 Ramsey Road, Shirley, NY 11967, USA

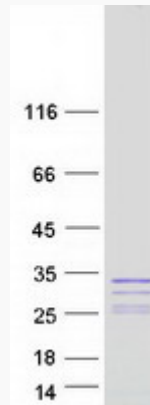
<b>Stability</b>	Stable for 3 months from receipt of products under proper storage and handling conditions.
<b>Storage</b>	Store at -80 centigrade. Avoid repeated freeze-thaw cycles.
<b>Concentration</b>	50 µg/mL as determined by BCA
<b>Storage Buffer</b>	100 mM glycine, 25 mM Tris-HCl, pH 7.3.
<b>GENE INFORMATION</b>	
<b>Gene Name</b>	SCG5 secretogranin V [ Homo sapiens (human) ]
<b>Official Symbol</b>	SCG5
<b>Synonyms</b>	SCG5; secretogranin V (7B2 protein); secretory granule, neuroendocrine protein 1 (7B2 protein), SGNE1; neuroendocrine protein 7B2; 7B2; prohormone convertase chaperone; SgV; secretogranin-5; pituitary polypeptide; secretory granule endocrine protein I; secretory granule, neuroendocrine protein 1 (7B2 protein); P7B2; SGNE1;
<b>Gene ID</b>	6447
<b>mRNA Refseq</b>	NM_003020
<b>Protein Refseq</b>	NP_003011
<b>MIM</b>	173120
<b>UniProt ID</b>	P05408

 Tel: 1-631-559-9269 1-516-512-3133

 Email: [info@creative-biomart.com](mailto:info@creative-biomart.com)  Fax: 1-631-938-8127

 45-1 Ramsey Road, Shirley, NY 11967, USA

**SDS-PAGE**



 Tel: 1-631-559-9269 1-516-512-3133

 Email: [info@creative-biomart.com](mailto:info@creative-biomart.com)  Fax: 1-631-938-8127

 45-1 Ramsey Road, Shirley, NY 11967, USA