

Recombinant Full Length Human SCGB1A1 Protein, C-Flag-tagged

Cat. No. SCGB1A1-1398HFL **Lot. No.** (See product label)

SPECIFICATION

Product Overview	Recombinant Full Length Human SCGB1A1 Protein, fused to Flag-tag at C-terminus, was expressed in Mammalian cells.
Species	Human
Source	Mammalian Cells
Description	This gene encodes a member of the secretoglobin family of small secreted proteins. The encoded protein has been implicated in numerous functions including anti-inflammation, inhibition of phospholipase A2 and the sequestering of hydrophobic ligands. Defects in this gene are associated with a susceptibility to asthma.
Form	25 mM Tris HCl, pH 7.3, 100 mM glycine, 10% glycerol.
Molecular Mass	9.8 kDa
AA Sequence	MKLAVTLTLVTLALCCSSASAEICPSFQRVIETLLMDTPSSYEAAAMELFSPDQDMREA GAQLKKLVDTLPQKPRESIKLMEDIAQSSLCNTRTRPLEQKLISEEDLAANDILDYKD DDDKV
Purity	> 80% as determined by SDS-PAGE and Coomassie blue staining.
Stability	Stable for 12 months from the date of receipt of the product under proper storage and handling conditions. Avoid repeated freeze-thaw cycles.

 Tel: 1-631-559-9269 1-516-512-3133

 Email: info@creative-biomart.com  Fax: 1-631-938-8127

 45-1 Ramsey Road, Shirley, NY 11967, USA

Storage	Store at -80 centigrade.
Concentration	>50 ug/mL as determined by microplate BCA method.
Preparation	Recombinant protein was captured through anti-DDK affinity column followed by conventional chromatography steps.
Protein Families	Druggable Genome, Secreted Protein
Full Length	Full L.

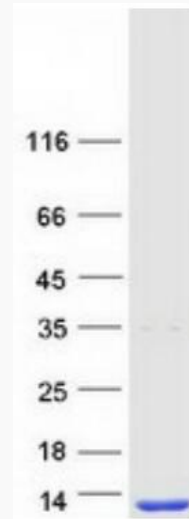
GENE INFORMATION

Gene Name	SCGB1A1 secretoglobin family 1A member 1 [Homo sapiens (human)]
Official Symbol	SCGB1A1
Synonyms	UGB; UP1; CC10; CC16; CCSP; UP-1; CCPBP
Gene ID	7356
mRNA Refseq	NM_003357.5
Protein Refseq	NP_003348.1
MIM	192020
UniProt ID	P11684

 Tel: 1-631-559-9269 1-516-512-3133

 Email: info@creative-biomart.com  Fax: 1-631-938-8127

 45-1 Ramsey Road, Shirley, NY 11967, USA



Coomassie blue staining of purified SCGB1A1 protein.

 Tel: 1-631-559-9269 1-516-512-3133

 Email: info@creative-biomart.com  Fax: 1-631-938-8127

 45-1 Ramsey Road, Shirley, NY 11967, USA