

## Recombinant Human SCGB1A1 protein

**Cat. No.** SCGB1A1-533H    **Lot. No.** (See product label)

### SPECIFICATION

<b>Product Overview</b>	Recombinant Human SCGB1A1 protein was expressed in Escherichia coli.
<b>Species</b>	Human
<b>Source</b>	E.coli
<b>ProteinLength</b>	70
<b>Description</b>	This gene encodes a member of the secretoglobin family of small secreted proteins. The encoded protein has been implicated in numerous functions including anti-inflammation, inhibition of phospholipase A2 and the sequestering of hydrophobic ligands. Defects in this gene are associated with a susceptibility to asthma.
<b>Form</b>	Lyophilized from a 0.2µm filtered concentrated solution in PBS, pH 7.4.
<b>Bio-activity</b>	Fully biologically active when compared to standard. The ED50 as determined by the ability of the immobilized protein to support the adhesion of the A549 human lung carcinoma cells is less than 5.0 µg/ml, corresponding to a specific activity of > 200 IU/mg.
<b>Molecular Mass</b>	Approximately 15.8 kDa, a disulfide-linked homodimeric protein containing two 70 amino acid residues polypeptide.
<b>AA Sequence</b>	EICPSFQRVIETLLMDTPSSYEAAAMELFSPDQDMREAGAQLKKLVDTLTPQKPRESIIK LMEKIAQSSLCN

 Tel: 1-631-559-9269    1-516-512-3133

 Email: [info@creative-biomart.com](mailto:info@creative-biomart.com)     Fax: 1-631-938-8127

 45-1 Ramsey Road, Shirley, NY 11967, USA

<b>Endotoxin</b>	Less than 0.1 EU/g of rHuUteroglobin as determined by LAL method.
<b>Purity</b>	>98% by SDS-PAGE and HPLC analysis.
<b>Storage</b>	Use a manual defrost freezer and avoid repeated freeze-thaw cycles. 12 months from date of receipt, -20 to -70 centigrade as supplied. 1 month, 2 to 8 centigrade under sterile conditions after reconstitution. 3 months, -20 to -70 centigrade under sterile conditions after reconstitution.
<b>Reconstitution</b>	We recommend that this vial be briefly centrifuged prior to opening to bring the contents to the bottom. Reconstitute in sterile distilled water or aqueous buffer containing 0.1 % BSA to a concentration of 0.1-1.0 mg/mL. Stock solutions should be apportioned into working aliquots and stored at ≤-20 centigrade. Further dilutions should be made in appropriate buffered solutions.

## GENE INFORMATION

<b>Gene Name</b>	SCGB1A1
<b>Official Symbol</b>	SCGB1A1
<b>Synonyms</b>	SCGB1A1; secretoglobin, family 1A, member 1 (uteroglobin); UGB, uteroglobin; uteroglobin; CC10; CC16; CCSP; Uteroglobin (Clara cell specific 10 kD protein); blastokinin; urine protein 1; urinary protein 1; clara cells 10 kDa secretory protein; clara cell phospholipid-binding protein; UGB; UP1; UP-1; CCPBP;
<b>Gene ID</b>	7356
<b>mRNA Refseq</b>	NM_003357
<b>Protein Refseq</b>	NP_003348

 Tel: 1-631-559-9269 1-516-512-3133

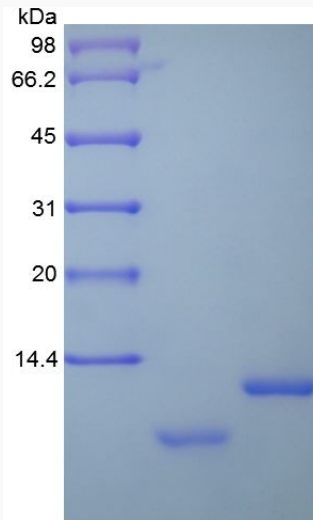
 Email: [info@creative-biomart.com](mailto:info@creative-biomart.com)  Fax: 1-631-938-8127

 45-1 Ramsey Road, Shirley, NY 11967, USA

MIM 192020

UniProt ID P11684

SDS-PAGE of  
SCGB1A1-533H



 Tel: 1-631-559-9269 1-516-512-3133

 Email: [info@creative-biomart.com](mailto:info@creative-biomart.com)  Fax: 1-631-938-8127

 45-1 Ramsey Road, Shirley, NY 11967, USA