

Recombinant Human SCGB1A1 Protein, Myc/DDK-tagged, C13 and N15-labeled

Cat. No. SCGB1A1-974H **Lot. No.** (See product label)

SPECIFICATION

Product Overview	SCGB1A1 MS Standard C13 and N15-labeled recombinant protein (NP_003348) with a C-terminal MYC/DDK tag, was expressed in HEK293 cells.
Species	Human
Source	HEK293
Description	This gene encodes a member of the secretoglobulin family of small secreted proteins. The encoded protein has been implicated in numerous functions including anti-inflammation, inhibition of phospholipase A2 and the sequestering of hydrophobic ligands. Defects in this gene are associated with a susceptibility to asthma.
Molecular Mass	10 kDa
AA Sequence	MKLAVTLTLVTLALCCSSASAEICPSFQRVIETLLMDTPSSYEAMELFSPDQDMREA GAQLKKLVDTLPQKPRESIIKLMEKIAQSSLCNTRTRPLEQKLISEEDLAANDILDYKD DDDKV
Purity	> 80% as determined by SDS-PAGE and Coomassie blue staining
Stability	Stable for 3 months from receipt of products under proper storage and handling conditions.
Storage	Store at -80 centigrade. Avoid repeated freeze-thaw cycles.

 Tel: 1-631-559-9269 1-516-512-3133

 Email: info@creative-biomart.com  Fax: 1-631-938-8127

 45-1 Ramsey Road, Shirley, NY 11967, USA

Concentration 50 µg/mL as determined by BCA

Storage Buffer 100 mM glycine, 25 mM Tris-HCl, pH 7.3.

GENE INFORMATION

Gene Name SCGB1A1 secretoglobin family 1A member 1 [Homo sapiens (human)]

Official Symbol SCGB1A1

Synonyms

SCGB1A1; secretoglobin, family 1A, member 1 (uteroglobin); UGB, uteroglobin; uteroglobin; CC10; CC16; CCSP; Uteroglobin (Clara cell specific 10 kD protein); blastokinin; urine protein 1; urinary protein 1; clara cells 10 kDa secretory protein; clara cell phospholipid-binding protein; UGB; UP1; UP-1; CCPBP;

Gene ID 7356

mRNA Refseq NM_003357

Protein Refseq NP_003348

MIM 192020

UniProt ID P11684

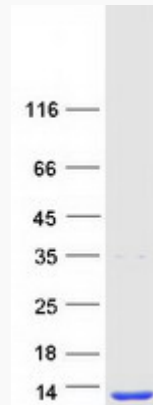
 Tel: 1-631-559-9269 1-516-512-3133

 Email: info@creative-biomart.com  Fax: 1-631-938-8127

 45-1 Ramsey Road, Shirley, NY 11967, USA



SDS-PAGE



Tel: 1-631-559-9269 1-516-512-3133

Email: info@creative-biomart.com Fax: 1-631-938-8127

45-1 Ramsey Road, Shirley, NY 11967, USA