

Recombinant Human SCGB1D2 Protein, Myc/DDK-tagged, C13 and N15-labeled

Cat. No. SCGB1D2-5362H **Lot. No.** (See product label)

SPECIFICATION

Product Overview

SCGB1D2 MS Standard C13 and N15-labeled recombinant protein (NP_006542) with a C-terminal MYC/DDK tag, was expressed in HEK293 cells.

Species

Human

Source

HEK293

Description

The protein encoded by this gene is a member of the lipophilin subfamily, part of the uteroglobin superfamily, and is an ortholog of prostatein, the major secretory glycoprotein of the rat ventral prostate gland. Lipophilin gene products are widely expressed in normal tissues, especially in endocrine-responsive organs. Assuming that human lipophilins are the functional counterparts of prostatein, they may be transcriptionally regulated by steroid hormones, with the ability to bind androgens, other steroids and possibly bind and concentrate estramustine, a chemotherapeutic agent widely used for prostate cancer. Although the gene has been reported to be on chromosome 10, this sequence appears to be from a cluster of genes on chromosome 11 that includes mammaglobin 2.

Molecular Mass

9.9 kDa

AA Sequence

MKLSVCLLLVTLALCCYQANAFCALVSELLDFFFISEPLFKLSLAKFDAPPEAVAAK
LGVKRCTDQMSLQKRSLIAEVLVKILKKCSVTRTRPLEQKLISEEDLAANDILDYKDDD
DKV

 Tel: 1-631-559-9269 1-516-512-3133

 Email: info@creative-biomart.com  Fax: 1-631-938-8127

 45-1 Ramsey Road, Shirley, NY 11967, USA

Purity	> 80% as determined by SDS-PAGE and Coomassie blue staining
Stability	Stable for 3 months from receipt of products under proper storage and handling conditions.
Storage	Store at -80 centigrade. Avoid repeated freeze-thaw cycles.
Concentration	50 µg/mL as determined by BCA
Storage Buffer	100 mM glycine, 25 mM Tris-HCl, pH 7.3.

GENE INFORMATION

Gene Name	SCGB1D2 secretoglobin family 1D member 2 [Homo sapiens (human)]
Official Symbol	SCGB1D2
Synonyms	SCGB1D2; secretoglobin, family 1D, member 2; secretoglobin family 1D member 2; LIPB; lipophilin B (uteroglobin family member); prostatein like; LPHB; prostatein like lipophilin B; lipophilin-B; prostatein-like lipophilin B;
Gene ID	10647
mRNA Refseq	NM_006551
Protein Refseq	NP_006542
MIM	615061
UniProt ID	O95969

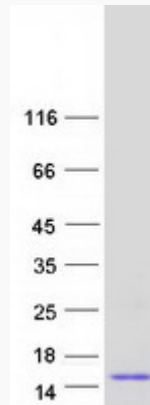
 Tel: 1-631-559-9269 1-516-512-3133

 Email: info@creative-biomart.com  Fax: 1-631-938-8127

 45-1 Ramsey Road, Shirley, NY 11967, USA



SDS-PAGE



Tel: 1-631-559-9269 1-516-512-3133

Email: info@creative-biomart.com Fax: 1-631-938-8127

45-1 Ramsey Road, Shirley, NY 11967, USA