

Recombinant Full Length Human SCGB2A1 Protein, C-Flag-tagged

Cat. No. SCGB2A1-1262HFL **Lot. No.** (See product label)

SPECIFICATION

Product Overview	Recombinant Full Length Human SCGB2A1 Protein, fused to Flag-tag at C-terminus, was expressed in Mammalian cells.
Species	Human
Source	Mammalian Cells
Description	Involved in androgen receptor signaling pathway. Located in extracellular space.
Form	25 mM Tris HCl, pH 7.3, 100 mM glycine, 10% glycerol.
Molecular Mass	10.7 kDa
AA Sequence	MKLLMVLMLAALLLHCYADSGCKLLEDMVEKTINSDISIPEYKELLQEFIDSDAAAAM GKFKQCFLNQSHRTLKNFGLMMHTVYDSIWCNMKSNTTRTRPLEQKLISEEDLAANDI LDYKDDDDKV
Purity	> 80% as determined by SDS-PAGE and Coomassie blue staining.
Stability	Stable for 12 months from the date of receipt of the product under proper storage and handling conditions. Avoid repeated freeze-thaw cycles.
Storage	Store at -80 centigrade.

 Tel: 1-631-559-9269 1-516-512-3133

 Email: info@creative-biomart.com  Fax: 1-631-938-8127

 45-1 Ramsey Road, Shirley, NY 11967, USA

Concentration >50 ug/mL as determined by microplate BCA method.

Preparation Recombinant protein was captured through anti-DDK affinity column followed by conventional chromatography steps.

Full Length Full L.

GENE INFORMATION

Gene Name SCGB2A1 secretoglobin family 2A member 1 [Homo sapiens (human)]

Official Symbol SCGB2A1

Synonyms LPHC; LPNC; MGB2; UGB3

Gene ID 4246

mRNA Refseq NM_002407.3

Protein Refseq NP_002398.1

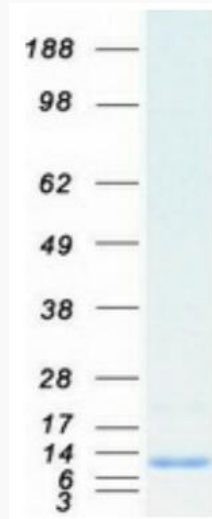
MIM 604398

UniProt ID O75556

 Tel: 1-631-559-9269 1-516-512-3133

 Email: info@creative-biomart.com  Fax: 1-631-938-8127

 45-1 Ramsey Road, Shirley, NY 11967, USA



Coomassie blue staining of purified SCGB2A1 protein.

 Tel: 1-631-559-9269 1-516-512-3133

 Email: info@creative-biomart.com  Fax: 1-631-938-8127

 45-1 Ramsey Road, Shirley, NY 11967, USA