

Recombinant Human SCGB2A1 Protein, MBP/His-tagged

Cat. No. SCGB2A1-250H Lot. No. (See product label)

SPECIFICATION

Product Overview	Recombinant Human SCGB2A1 Protein, fused to MBP/His-tag, was expressed in E.coli.
Species	Human
Source	E.coli
Description	Involved in androgen receptor signaling pathway. Located in extracellular space.
Form	PBS, pH 7.4.
Molecular Mass	53.85 kDa
AA Sequence	MHHHHHMKI EEGKLVWIN GDKGYNGLAE VGKKFEKDTG IKVTVEHPDK LEEKFPQVAA TGDGPDIIFW AHDRFGGYAQ SGLLAEITPD KAFQDKLYPF TWDAVRYNGK LIAYPIAVEA LSLIYNKDLL PNPPKTWEEI PALDKELKAK GKSALMFNLQ EPYFTWPLIA ADGGYAFKYE NGKYDIKDVG VDNAGAKAGL TFLVDLIK NK HMNADTDYSI AEA AFNKGET AMTINGPWAW SNIDTSK VNY GVTVLPTFKG QPSKPFVGV L SAGINAASPN KELA KEFLEN YLLTDEGLEA VNKDKPLGAV ALKSYEEELV KDPRIAATME NAQKGEIMPN IPQM SAFWYA VRTAVINAAS GRQTVDEALK DAQTHHHHHH DDDDKMKL LMVLM L AALL LHCYADSGCK LLEDMVEKTI NSDISIPEYK ELLQE FIDSD AAAEAMGKFK QCFLNQSHRT LKNFGLMMHT VYDSIWCNMKSN
Purity	90% by SDS-PAGE

 Tel: 1-631-559-9269 1-516-512-3133

 Email: info@creative-biomart.com  Fax: 1-631-938-8127

 45-1 Ramsey Road, Shirley, NY 11967, USA

Storage	Store it under sterile conditions at -20 to -80 centigrade. It is recommended that the protein be aliquoted for optimal storage. Avoid repeated freeze-thaw cycles.
----------------	---

Concentration	1.0 mg/ml
----------------------	-----------

GENE INFORMATION

Gene Name	SCGB2A1 secretoglobin family 2A member 1 [Homo sapiens (human)]
------------------	---

Official Symbol	SCGB2A1
------------------------	---------

Synonyms	LPHC; LPNC; MGB2; UGB3
-----------------	------------------------

Gene ID	4246
----------------	------

mRNA Refseq	NM_002407.3
--------------------	-------------

Protein Refseq	NP_002398.1
-----------------------	-------------

MIM	604398
------------	--------

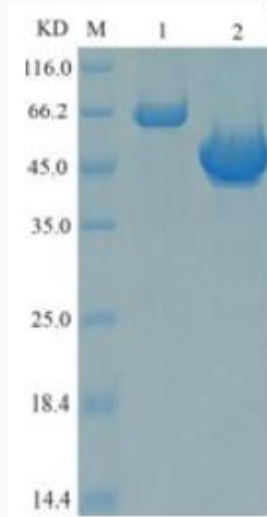
UniProt ID	O75556
-------------------	--------

 Tel: 1-631-559-9269 1-516-512-3133

 Email: info@creative-biomart.com  Fax: 1-631-938-8127

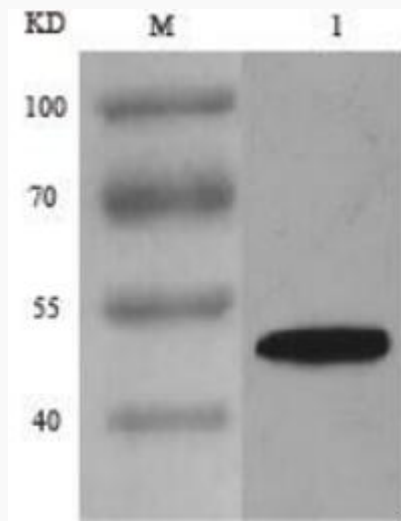
 45-1 Ramsey Road, Shirley, NY 11967, USA

SDS-PAGE



M: Protein ladder
1: 0.5mg/ml BSA
2: Purified protein

SDS-PAGE



M: Protein ladder

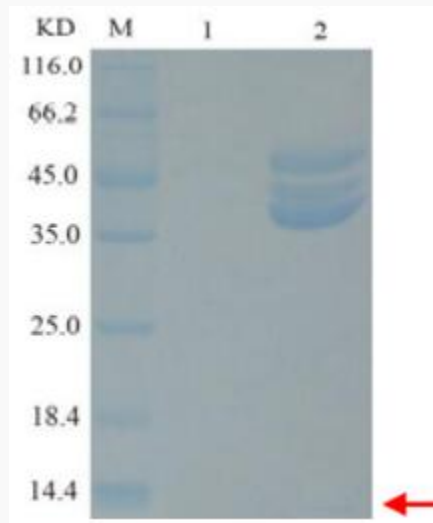
 Tel: 1-631-559-9269 1-516-512-3133

 Email: info@creative-biomart.com  Fax: 1-631-938-8127


 45-1 Ramsey Road, Shirley, NY 11967, USA

1: Purified protein

SDS-PAGE



- 1: The protein elution after incubating with the nickel column after EK digestion.
- 2: The resin after protein incubating with the nickel column after EK digestion.

 Tel: 1-631-559-9269 1-516-512-3133

 Email: info@creative-biomart.com  Fax: 1-631-938-8127

 45-1 Ramsey Road, Shirley, NY 11967, USA