

## Recombinant Human secretoglobin, family 2A, member 2 Protein, His&Flag tagged

Cat. No. SCGB2A2-176H Lot. No. (See product label)

### SPECIFICATION

<b>Product Overview</b>	Recombinant human Mammaglobin-A protein (Q13296-1) (Gly 19-Phe 93) with both His, Flag tag at the C-terminus was expressed in HEK293.
<b>Species</b>	Human
<b>Source</b>	HEK293
<b>ProteinLength</b>	19-93aa
<b>Description</b>	Predicted to be involved in androgen receptor signaling pathway. Predicted to be located in extracellular region. Predicted to be active in extracellular space.
<b>Tag</b>	C-His&Flag
<b>Molecular Mass</b>	11.2 kDa
<b>Endotoxin</b>	Less than 1.0 EU/μg by the LAL method.
<b>Purity</b>	>95% as determined by SDS-PAGE.
<b>Storage</b>	Please avoid repeated freeze-thaw cycles. Samples are stable for up to twelve months from date of receipt at -20 to -80 centigrade. It is recommended that aliquot the reconstituted solution to minimize freeze-thaw cycles.

 Tel: 1-631-559-9269 1-516-512-3133

 Email: [info@creative-biomart.com](mailto:info@creative-biomart.com)  Fax: 1-631-938-8127

 45-1 Ramsey Road, Shirley, NY 11967, USA

<b>Storage Buffer</b>	Lyophilized from a 0.2 µm filtered solution of PBS, pH7.4, 5% Trehalose, 5% mannitol.
<b>Reconstitution</b>	Reconstitute at 250 µg/mL in sterile water.

## GENE INFORMATION

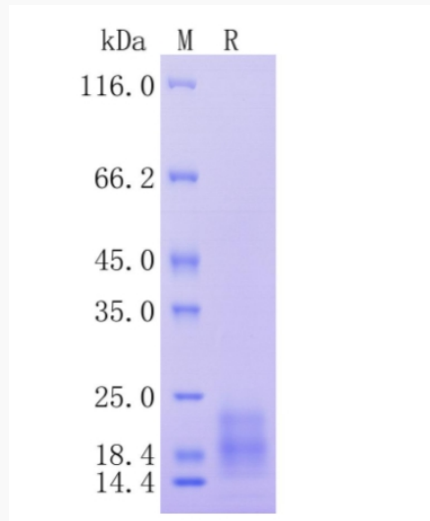
<b>Gene Name</b>	SCGB2A2 secretoglobin, family 2A, member 2 [ Homo sapiens (human) ]
<b>Official Symbol</b>	SCGB2A2
<b>Synonyms</b>	SCGB2A2; secretoglobin, family 2A, member 2; mammaglobin 1, MGB1; mammaglobin-A; mammaglobin A; MGC71974; UGB2; mammaglobin 1; mammaglobin-1; MGB1;
<b>Gene ID</b>	4250
<b>mRNA Refseq</b>	NM_002411
<b>Protein Refseq</b>	NP_002402
<b>MIM</b>	605562
<b>UniProt ID</b>	Q13296

 Tel: 1-631-559-9269 1-516-512-3133

 Email: [info@creative-biomart.com](mailto:info@creative-biomart.com)  Fax: 1-631-938-8127

 45-1 Ramsey Road, Shirley, NY 11967, USA

**Protein on SDS-  
PAGE under  
reducing (R)  
condition.**



 Tel: 1-631-559-9269 1-516-512-3133

 Email: [info@creative-biomart.com](mailto:info@creative-biomart.com)  Fax: 1-631-938-8127

 45-1 Ramsey Road, Shirley, NY 11967, USA