

Recombinant Human SCGB2A2 Protein, His/GST-tagged

Cat. No. SCGB2A2-506H Lot. No. (See product label)

SPECIFICATION

Product Overview	Recombinant Human SCGB2A2(Gly19~Phe93) fused with His/GST tag at N-terminal was expressed in E. coli.
Species	Human
Source	E.coli
ProteinLength	Gly19~Phe93
Form	PBS, pH7.4, containing 0.01% SKL, 1mM DTT, 5% Trehalose and Proclin300.
Molecular Mass	38.5kDa
Endotoxin	<1.0EU per 1g (determined by the LAL method)
Purity	> 90%
Applications	Positive Control; Immunogen; SDS-PAGE; WB. If bio-activity of the protein is needed, please check active protein.
Stability	The thermal stability is described by the loss rate. The loss rate was determined by accelerated thermal degradation test, that is, incubate the protein at 37 centigrade for 48h, and no obvious degradation and precipitation were observed. The loss rate is less than 5% within the expiration date under appropriate storage condition.

 Tel: 1-631-559-9269 1-516-512-3133

 Email: info@creative-biomart.com  Fax: 1-631-938-8127

 45-1 Ramsey Road, Shirley, NY 11967, USA

Storage Avoid repeated freeze/thaw cycles. Store at 2-8 centigrade for one month. Aliquot and store at -80 centigrade for 12 months.

Reconstitution Reconstitute in PBS or others.

GENE INFORMATION

Gene Name SCGB2A2 secretoglobin, family 2A, member 2 [Homo sapiens]

Official Symbol SCGB2A2

Synonyms SCGB2A2; secretoglobin, family 2A, member 2; mammaglobin 1 , MGB1; mammaglobin-A; mammaglobin A; MGC71974; UGB2; mammaglobin 1; mammaglobin-1; MGB1;

Gene ID 4250

mRNA Refseq NM_002411

Protein Refseq NP_002402

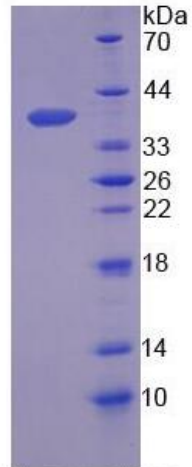
MIM 605562

UniProt ID Q13296

 Tel: 1-631-559-9269 1-516-512-3133

 Email: info@creative-biomart.com  Fax: 1-631-938-8127

 45-1 Ramsey Road, Shirley, NY 11967, USA



15% SDS-PAGE

Tel: 1-631-559-9269 1-516-512-3133

Email: info@creative-biomart.com Fax: 1-631-938-8127

45-1 Ramsey Road, Shirley, NY 11967, USA