

Recombinant Full Length Human SCGB2A2 Protein, C-Flag-tagged

Cat. No. SCGB2A2-672HFL Lot. No. (See product label)

SPECIFICATION

Product Overview	Recombinant Full Length Human SCGB2A2 Protein, fused to Flag-tag at C-terminus, was expressed in Mammalian cells.
Species	Human
Source	Mammalian Cells
Description	Predicted to be involved in androgen receptor signaling pathway. Predicted to be located in extracellular region. Predicted to be active in extracellular space.
Form	25 mM Tris HCl, pH 7.3, 100 mM glycine, 10% glycerol.
Molecular Mass	10.3 kDa
AA Sequence	MKLLMVLMLAALSQHCYAGSGCPLEENVISKTINPQVSKTEYKELLQEFIDDNATTNA IDELKECFLNQTDETLSNVEVFMQLIYDSSLCDLFTTRTRPLEQKLISEEDLAANDILDY KDDDDKV
Purity	> 80% as determined by SDS-PAGE and Coomassie blue staining.
Stability	Stable for 12 months from the date of receipt of the product under proper storage and handling conditions. Avoid repeated freeze-thaw cycles.
Storage	Store at -80 centigrade.

 Tel: 1-631-559-9269 1-516-512-3133

 Email: info@creative-biomart.com  Fax: 1-631-938-8127

 45-1 Ramsey Road, Shirley, NY 11967, USA

Concentration >50 ug/mL as determined by microplate BCA method.

Preparation Recombinant protein was captured through anti-DDK affinity column followed by conventional chromatography steps.

Full Length Full L.

GENE INFORMATION

Gene Name SCGB2A2 secretoglobin family 2A member 2 [Homo sapiens (human)]

Official Symbol SCGB2A2

Synonyms MGB1; UGB2; PSBP1

Gene ID 4250

mRNA Refseq NM_002411.4

Protein Refseq NP_002402.1

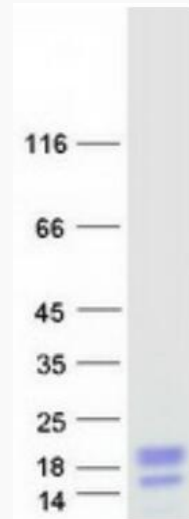
MIM 605562

UniProt ID Q13296

 Tel: 1-631-559-9269 1-516-512-3133

 Email: info@creative-biomart.com  Fax: 1-631-938-8127

 45-1 Ramsey Road, Shirley, NY 11967, USA



Coomassie blue staining of purified SCGB2A2 protein.

 Tel: 1-631-559-9269 1-516-512-3133

 Email: info@creative-biomart.com  Fax: 1-631-938-8127

 45-1 Ramsey Road, Shirley, NY 11967, USA