

Recombinant Human SCGB2A2 Protein, Myc/DDK-tagged, C13 and N15-labeled

Cat. No. SCGB2A2-854H **Lot. No.** (See product label)

SPECIFICATION

Product Overview	SCGB2A2 MS Standard C13 and N15-labeled recombinant protein (NP_002402) with a C-terminal MYC/DDK tag, was expressed in HEK293 cells.
Species	Human
Source	HEK293
Description	SCGB2A2 (Secretoglobin Family 2A Member 2) is a Protein Coding gene. Diseases associated with SCGB2A2 include Breast Cancer and Lung Cancer Susceptibility 3. An important paralog of this gene is SCGB2A1.
Molecular Mass	10.5 kDa
AA Sequence	MKLLMVLMLAALSQHCYAGSGCPLLENVISKTINPQVSKTEYKELLQEFIDNATTNA IDELKECFLNQTDETLNVEVFMQLIYDSSLCDLFRTRTRPLEQKLISEEDLAANDILDY KDDDDKV
Purity	> 80% as determined by SDS-PAGE and Coomassie blue staining
Stability	Stable for 3 months from receipt of products under proper storage and handling conditions.
Storage	Store at -80 centigrade. Avoid repeated freeze-thaw cycles.

 Tel: 1-631-559-9269 1-516-512-3133

 Email: info@creative-biomart.com  Fax: 1-631-938-8127

 45-1 Ramsey Road, Shirley, NY 11967, USA

Concentration 50 µg/mL as determined by BCA

Storage Buffer 100 mM glycine, 25 mM Tris-HCl, pH 7.3.

GENE INFORMATION

Gene Name SCGB2A2 secretoglobin family 2A member 2 [Homo sapiens (human)]

Official Symbol SCGB2A2

Synonyms SCGB2A2; secretoglobin, family 2A, member 2; mammaglobin 1, MGB1; mammaglobin-A; mammaglobin A; MGC71974; UGB2; mammaglobin 1; mammaglobin-1; MGB1;

Gene ID 4250

mRNA Refseq NM_002411

Protein Refseq NP_002402

MIM 605562

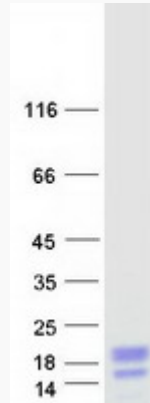
UniProt ID Q13296

 Tel: 1-631-559-9269 1-516-512-3133

 Email: info@creative-biomart.com  Fax: 1-631-938-8127

 45-1 Ramsey Road, Shirley, NY 11967, USA

SDS-PAGE



 Tel: 1-631-559-9269 1-516-512-3133

 Email: info@creative-biomart.com  Fax: 1-631-938-8127

 45-1 Ramsey Road, Shirley, NY 11967, USA