

Recombinant Human SCGN Protein, Myc/DDK-tagged, C13 and N15-labeled

Cat. No. SCGN-6487H **Lot. No.** (See product label)

SPECIFICATION

Product Overview	SCGN MS Standard C13 and N15-labeled recombinant protein (NP_008929) with a C-terminal MYC/DDK tag, was expressed in HEK293 cells.
Species	Human
Source	HEK293
Description	The encoded protein is a secreted calcium-binding protein which is found in the cytoplasm. It is related to calbindin D-28K and calretinin. This protein is thought to be involved in KCL-stimulated calcium flux and cell proliferation.
Molecular Mass	31.9 kDa
AA Sequence	MDSSREPTLGRLDAAGFWQVWQRFDADEKGYIEEKELDAFFLHMLMKLGTDDTVM KANLHKVKQQFMTTQDASKDGRIRMKELAGMFLSEDENFLLLFRRENPLDSSVEFM QIWRKYDADSSGFISAAELRNFLRDLFLHHKKAISEAKLEEYTGTMKIFDRNKDGRL DLNDLARILALQENFLLQFKMDACSTEERKRDFEKIFAYYDVSKTGALEGPEVDGFV KDMMELVQPSISGVDLDFREILLRHCDVNDGKIQKSELALCLGLKINPTRTRPLEQ KLISEEDLAANDILDYKDDDDKV
Purity	> 80% as determined by SDS-PAGE and Coomassie blue staining
Stability	Stable for 3 months from receipt of products under proper storage and handling conditions.

 Tel: 1-631-559-9269 1-516-512-3133

 Email: info@creative-biomart.com  Fax: 1-631-938-8127

 45-1 Ramsey Road, Shirley, NY 11967, USA

Storage	Store at -80 centigrade. Avoid repeated freeze-thaw cycles.
----------------	---

Concentration	50 µg/mL as determined by BCA
----------------------	-------------------------------

Storage Buffer	100 mM glycine, 25 mM Tris-HCl, pH 7.3.
-----------------------	---

GENE INFORMATION

Gene Name	SCGN secretagogin, EF-hand calcium binding protein [Homo sapiens (human)]
------------------	---

Official Symbol	SCGN
------------------------	------

Synonyms	SCGN; secretagogin, EF-hand calcium binding protein; secretagogin; calbindin like; CALBL; DJ501N12.8; SECRET; SEGN; setagin;
-----------------	--

Gene ID	10590
----------------	-------

mRNA Refseq	NM_006998
--------------------	-----------

Protein Refseq	NP_008929
-----------------------	-----------

MIM	609202
------------	--------

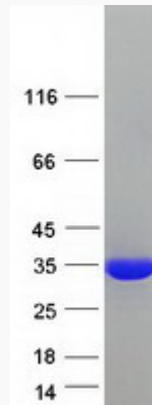
UniProt ID	O76038
-------------------	--------

 Tel: 1-631-559-9269 1-516-512-3133

 Email: info@creative-biomart.com  Fax: 1-631-938-8127

 45-1 Ramsey Road, Shirley, NY 11967, USA

SDS-PAGE



 Tel: 1-631-559-9269 1-516-512-3133

 Email: info@creative-biomart.com  Fax: 1-631-938-8127

 45-1 Ramsey Road, Shirley, NY 11967, USA