

# Recombinant Human SCLY Protein, Myc/DDK-tagged, C13 and N15-labeled

**Cat. No.** SCLY-5213H    **Lot. No.** (See product label)

## SPECIFICATION

### Product Overview

SCLY MS Standard C13 and N15-labeled recombinant protein (NP\_057594) with a C-terminal MYC/DDK tag, was expressed in HEK293 cells.

### Species

Human

### Source

HEK293

### Description

Selenocysteine lyase (SCLY; EC 4.4.1.16) catalyzes the pyridoxal 5-prime phosphate-dependent conversion of L-selenocysteine to L-alanine and elemental selenium.

### Molecular Mass

48.2 kDa

### AA Sequence

MEAAVAPGRDAPAPAASQPSGCGKHNSPERKVYMDYNATTPLEPEVIQAMTKAMW  
 EAWGNPSSPYSAGRKAKDIINAARESLAKMIGGKPQDIIFTSGGTESNNLVIHSVVKH  
 FHANQTSKGHTGGHHSPVKGAKPHFITSSVEHDSIRLPLEHLVEEQVAAVTFVPVSK  
 VSGQTEVDDILAAVRPTTRLVTIMLANNETGIVMPVPEISQRIKALNQERVAAGLPPIL  
 VHTDAAQALGKQRVDVEDLGVDFTIVGHKFGYGRIGALYIRGLGEFTPLYPMLFGG  
 GQERNFRPGTENTPMIAGLGKAAELVTQNCEAYEAHMRDVRDYLEERLEAEFGQK  
 RIHLNSQFPGTQRLPNTCNFSIRGPRLQGHVVLQAQCRVLMASVGAACHSDHGDQPS  
 PVLLSYGVFPDVARNALRLSVGRSTTRAEDLVVQDLKQAVAQLEDQATRTRPLEQ  
 KLISEEDLAANDILDYKDDDDKV

### Purity

> 80% as determined by SDS-PAGE and Coomassie blue staining

 Tel: 1-631-559-9269    1-516-512-3133

 Email: [info@creative-biomart.com](mailto:info@creative-biomart.com)     Fax: 1-631-938-8127

 45-1 Ramsey Road, Shirley, NY 11967, USA

<b>Stability</b>	Stable for 3 months from receipt of products under proper storage and handling conditions.
<b>Storage</b>	Store at -80 centigrade. Avoid repeated freeze-thaw cycles.
<b>Concentration</b>	50 µg/mL as determined by BCA
<b>Storage Buffer</b>	100 mM glycine, 25 mM Tris-HCl, pH 7.3.
<b>GENE INFORMATION</b>	
<b>Gene Name</b>	SCLY selenocysteine lyase [ Homo sapiens (human) ]
<b>Official Symbol</b>	SCLY
<b>Synonyms</b>	SCLY; selenocysteine lyase; putative selenocysteine lyase; SCL; hSCL;
<b>Gene ID</b>	51540
<b>mRNA Refseq</b>	NM_016510
<b>Protein Refseq</b>	NP_057594
<b>MIM</b>	611056
<b>UniProt ID</b>	Q96I15

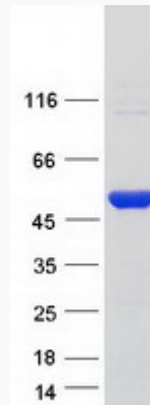
 Tel: 1-631-559-9269 1-516-512-3133

 Email: [info@creative-biomart.com](mailto:info@creative-biomart.com)  Fax: 1-631-938-8127

 45-1 Ramsey Road, Shirley, NY 11967, USA



**SDS-PAGE**



Tel: 1-631-559-9269 1-516-512-3133

Email: [info@creative-biomart.com](mailto:info@creative-biomart.com) Fax: 1-631-938-8127

45-1 Ramsey Road, Shirley, NY 11967, USA