

Recombinant Human SCN1B Protein, GST-tagged

Cat. No. SCN1B-48H Lot. No. (See product label)

SPECIFICATION

Product Overview	Human SCN1B full-length ORF (NP_001028.1, 1 a.a. - 218 a.a.) recombinant protein with GST-tag at N-terminal.
Species	Human
Source	Wheat Germ
Description	<p>Voltage-gated sodium channels are heteromeric proteins that function in the generation and propagation of action potentials in muscle and neuronal cells. They are composed of one alpha and two beta subunits, where the alpha subunit provides channel activity and the beta-1 subunit modulates the kinetics of channel inactivation. This gene encodes a sodium channel beta-1 subunit. Mutations in this gene result in generalized epilepsy with febrile seizures plus, Brugada syndrome 5, and defects in cardiac conduction. Multiple transcript variants encoding different isoforms have been found for this gene.</p>
Molecular Mass	49.61 kDa
AA Sequence	<p>MGRLLALVVGAAALVSSACGGCVEVDSETEAVYGMTFKILCISCKRRSETNAETFTW TFRQKGTEEFVKILRYENEVLQLEEDERFEGRVVWNGSRGTKDLQDLSIFITNVTYN HSGDYECHVYRLLFFENYEHNTSVVKKIHIEVVDKANRDMASIVSEIMMYVLIVVLTIW LVAEMICYKKIAAATETAQENASEYLAITSESKENCTGVQVAE</p>
Applications	<p>Enzyme-linked Immunoabsorbent Assay Western Blot (Recombinant protein)</p>

 Tel: 1-631-559-9269 1-516-512-3133

 Email: info@creative-biomart.com  Fax: 1-631-938-8127

 45-1 Ramsey Road, Shirley, NY 11967, USA

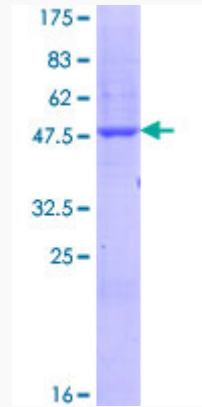
	Antibody Production Protein Array
Notes	Best use within three months from the date of receipt of this protein.
Storage	Store at -80 centigrade. Aliquot to avoid repeated freezing and thawing.
Storage Buffer	50 mM Tris-HCl, 10 mM reduced Glutathione, pH=8.0 in the elution buffer.
GENE INFORMATION	
Gene Name	SCN1B sodium voltage-gated channel beta subunit 1 [Homo sapiens (human)]
Official Symbol	SCN1B
Synonyms	ATFB13; BRGDA5; EIEE52; GEFSP1;
Gene ID	6324
mRNA Refseq	NM_001037
Protein Refseq	NP_001028
MIM	600235
UniProt ID	Q07699

 Tel: 1-631-559-9269 1-516-512-3133

 Email: info@creative-biomart.com  Fax: 1-631-938-8127

 45-1 Ramsey Road, Shirley, NY 11967, USA

**Quality Control
Testing**



12.5% SDS-PAGE Stained with Coomassie Blue.

 Tel: 1-631-559-9269 1-516-512-3133

 Email: info@creative-biomart.com  Fax: 1-631-938-8127

 45-1 Ramsey Road, Shirley, NY 11967, USA