

Recombinant Human SCN3B Protein, Myc/DDK-tagged, C13 and N15-labeled

Cat. No. SCN3B-2339H Lot. No. (See product label)

SPECIFICATION

Product Overview	SCN3B MS Standard C13 and N15-labeled recombinant protein (NP_001035241) with a C-terminal MYC/DDK tag, was expressed in HEK293 cells.
Species	Human
Source	HEK293
Description	Voltage-gated sodium channels are transmembrane glycoprotein complexes composed of a large alpha subunit and one or more regulatory beta subunits. They are responsible for the generation and propagation of action potentials in neurons and muscle. This gene encodes one member of the sodium channel beta subunit gene family, and influences the inactivation kinetics of the sodium channel. Two alternatively spliced variants, encoding the same protein, have been identified.
Molecular Mass	24.7 kDa
AA Sequence	MPAFNRLFPLASLVLIYWVSVCFPVCVEVPSETEAVQGNPMKLRCSMKREEVEAT TVVEWFYRPEGGKDFLIYEYRNGHQEVESPFQGRQLQWNGSKDLQDVSITVLNVTLN DSGLYTCNVSREFEFEAHRPFVKTTTRLIPLRVTEEAGEDFTSVVSEIMMYILLVFLTL WLLIEMIYCYRKVSKAEAAQENASDYLAIPSENKENS AVPVEESGPTRTRPLEQKLI SEEDLAANDILDYKDDDDKV
Purity	> 80% as determined by SDS-PAGE and Coomassie blue staining

 Tel: 1-631-559-9269 1-516-512-3133

 Email: info@creative-biomart.com  Fax: 1-631-938-8127

 45-1 Ramsey Road, Shirley, NY 11967, USA

Stability	Stable for 3 months from receipt of products under proper storage and handling conditions.
Storage	Store at -80 centigrade. Avoid repeated freeze-thaw cycles.
Concentration	50 µg/mL as determined by BCA
Storage Buffer	100 mM glycine, 25 mM Tris-HCl, pH 7.3.

GENE INFORMATION

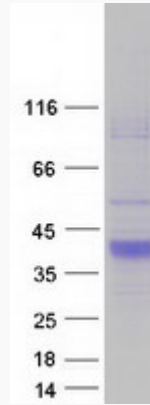
Gene Name	SCN3B sodium voltage-gated channel beta subunit 3 [Homo sapiens (human)]
Official Symbol	SCN3B
Synonyms	SCN3B; sodium voltage-gated channel beta subunit 3; SCNB3; ATFB16; BRGDA7; HSA243396; sodium channel subunit beta-3; sodium channel, voltage-gated, type III, beta subunit; voltage-gated sodium channel beta-3 subunit
Gene ID	55800
mRNA Refseq	NM_001040151
Protein Refseq	NP_001035241
MIM	608214
UniProt ID	Q9NY72

 Tel: 1-631-559-9269 1-516-512-3133

 Email: info@creative-biomart.com  Fax: 1-631-938-8127

 45-1 Ramsey Road, Shirley, NY 11967, USA

SDS-PAGE



 Tel: 1-631-559-9269 1-516-512-3133

 Email: info@creative-biomart.com  Fax: 1-631-938-8127

 45-1 Ramsey Road, Shirley, NY 11967, USA