

Recombinant Human sodium voltage-gated channel alpha subunit 5 Protein, His tagged

Cat. No. SCN5A-13H Lot. No. (See product label)

SPECIFICATION

Product Overview	Purified recombinant protein of Human sodium channel, voltage-gated, type V, alpha subunit (SCN5A), transcript variant 1, 450Ile-650Val, with N-terminal His tag, expressed in E.coli.
Species	Human
Source	E.coli
ProteinLength	450-650aa
Description	The protein encoded by this gene is an integral membrane protein and tetrodotoxin-resistant voltage-gated sodium channel subunit. This protein is found primarily in cardiac muscle and is responsible for the initial upstroke of the action potential in an electrocardiogram. Defects in this gene are a cause of long QT syndrome type 3 (LQT3), an autosomal dominant cardiac disease. Alternative splicing results in several transcript variants encoding different isoforms.
Tag	N-His
Molecular Mass	23.9 kDa
Purity	> 80% as determined by SDS-PAGE and Coomassie blue staining
Notes	For testing in cell culture applications, please filter before use. Note that you may

 Tel: 1-631-559-9269 1-516-512-3133

 Email: info@creative-biomart.com  Fax: 1-631-938-8127

 45-1 Ramsey Road, Shirley, NY 11967, USA

experience some loss of protein during the filtration process.

Stability

Stable for 12 months from the date of receipt of the product under proper storage and handling conditions. Avoid repeated freeze-thaw cycles.

Storage

Store at -80 centigrade after receiving vials.

Storage Buffer

50 mM Tris-HCl, pH 8.0, 8 M urea

Concentration

> 0.05 µg/µL as determined by microplate BCA method

GENE INFORMATION

Gene Name

SCN5A sodium voltage-gated channel alpha subunit 5 [Homo sapiens (human)]

Official Symbol

SCN5A

Synonyms

SCN5A; sodium channel, voltage-gated, type V, alpha subunit; CMD1E, sodium channel, voltage gated, type V, alpha (long QT syndrome 3); sodium channel protein type 5 subunit alpha; CDCD2; CMPD2; HB1; HB2; HBBB; HH1; ICCD; IVF; long QT syndrome 3; LQT3; Nav1.5; PFHB1; SSS1; voltage-gated sodium channel subunit alpha Nav1.5; sodium channel protein cardiac muscle subunit alpha; cardiac tetrodotoxin-insensitive voltage-dependent sodium channel alpha subunit; VF1; CMD1E;

Gene ID

6331

mRNA Refseq

NM_198056

Protein Refseq

NP_932173

 Tel: 1-631-559-9269 1-516-512-3133

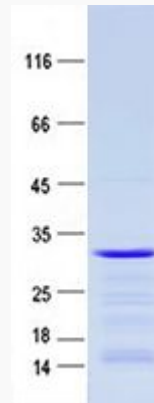
 Email: info@creative-biomart.com  Fax: 1-631-938-8127

 45-1 Ramsey Road, Shirley, NY 11967, USA

MIM 600163

UniProt ID Q14524

SDS-PAGE /Western-
blot



 Tel: 1-631-559-9269 1-516-512-3133

 Email: info@creative-biomart.com  Fax: 1-631-938-8127

 45-1 Ramsey Road, Shirley, NY 11967, USA