

# Recombinant Full Length Human sodium voltage-gated channel alpha subunit 5A Protein, GST tagged

Cat. No. SCN5A-15HFL Lot. No. (See product label)

## SPECIFICATION

### Product Overview

Human SCN5A full-length ORF (AAH51374.1, 1 a.a. - 223 a.a.) recombinant protein with GST-tag at N-terminal was expressed in Wheat Germ (in vitro).

### Species

Human

### Source

Wheat Germ

### ProteinLength

1-2016aa

### Description

The protein encoded by this gene is an integral membrane protein and tetrodotoxin-resistant voltage-gated sodium channel subunit. This protein is found primarily in cardiac muscle and is responsible for the initial upstroke of the action potential in an electrocardiogram. Defects in this gene are a cause of long QT syndrome type 3 (LQT3), an autosomal dominant cardiac disease. Alternative splicing results in several transcript variants encoding different isoforms.

### Tag

N-GST

### Molecular Mass

51.8 kDa

### AA Sequence

MANFLLPRGTSSFRFTRESLAAIEKRMAEKQARGSTTLQESREGLPEEEAPRPQL  
DLQASKKLPDLYGNPPQELIGEPLDLPFYSTQKTFIVLNKGKTIFRFSATNALYVLS  
PFHPIRRAAVKILVHSLFNMLIMCTILTNCVFMAQHDPWPWKYVEYTFITAIYTFESLV  
KILARGFCLHAFTFLRDPWNWLDVSVIIMAASVLGTLFFPMSIQATSTS

 Tel: 1-631-559-9269 1-516-512-3133

 Email: [info@creative-biomart.com](mailto:info@creative-biomart.com)  Fax: 1-631-938-8127

 45-1 Ramsey Road, Shirley, NY 11967, USA

<b>Quality Control Testing</b>	12.5 % SDS-PAGE Stained with Coomassie Blue.
<b>Applications</b>	Enzyme-linked Immunoabsorbent Assay Western Blot (Recombinant protein) Antibody Production Protein Array
<b>Notes</b>	Best use within three months from the date of receipt of this protein.
<b>Storage</b>	Store at -80 centigrade. Aliquot to avoid repeated freezing and thawing.
<b>Storage Buffer</b>	50 mM Tris-HCl, 10 mM reduced Glutathione, pH=8.0 in the elution buffer.

## GENE INFORMATION

<b>Gene Name</b>	SCN5A sodium voltage-gated channel alpha subunit 5 [ Homo sapiens (human) ]
<b>Official Symbol</b>	SCN5A
<b>Synonyms</b>	SCN5A; sodium channel, voltage-gated, type V, alpha subunit; CMD1E, sodium channel, voltage gated, type V, alpha (long QT syndrome 3); sodium channel protein type 5 subunit alpha; CDCD2; CMPD2; HB1; HB2; HBBD; HH1; ICCD; IVF; long QT syndrome 3; LQT3; Nav1.5; PFHB1; SSS1; voltage-gated sodium channel subunit alpha Nav1.5; sodium channel protein cardiac muscle subunit alpha; cardiac tetrodotoxin-insensitive voltage-dependent sodium channel alpha subunit; VF1; CMD1E;
<b>Gene ID</b>	6331
<b>mRNA Refseq</b>	NM_000335

 Tel: 1-631-559-9269 1-516-512-3133

 Email: [info@creative-biomart.com](mailto:info@creative-biomart.com)  Fax: 1-631-938-8127

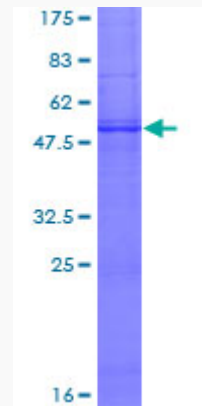
 45-1 Ramsey Road, Shirley, NY 11967, USA

**Protein Refseq** NP\_000326

**MIM** 600163

**UniProt ID** Q14524

**SDS-PAGE /Western-  
blot**



 Tel: 1-631-559-9269 1-516-512-3133

 Email: [info@creative-biomart.com](mailto:info@creative-biomart.com)  Fax: 1-631-938-8127

 45-1 Ramsey Road, Shirley, NY 11967, USA