

Recombinant Human SCN8A protein, GST-tagged

Cat. No. SCN8A-301483H Lot. No. (See product label)

SPECIFICATION

Product Overview	Recombinant Human SCN8A protein(1767-1907 aa), fused with N-terminal GST tag, was expressed in E.coli.
Species	Human
Source	E.coli
ProteinLength	1767-1907 aa
Form	The purified protein was lyophilized from sterile phosphate-buffered saline (PBS: 58 mM Na ₂ HPO ₄ , 17 mM NaH ₂ PO ₄ , 68 mM NaCl, pH 8.0). Prior to lyophilization, 5% (w/v) trehalose and 5% (w/v) mannitol were incorporated as cryoprotective excipients. The protein was eluted with a buffer containing 100 mM reduced glutathione (GSH).
AASequence	MENFSVATEESADPLSEDDFETFYEIWEKFDPDATQFIEYCKLADFADALEHPLRVP KPNTIELIAMDLPMVSGDRIHCLDILFAFTKRVLGDSGELDILRQQMEERFVASNPSK VSYEPITTTLRRKQEEVSAVVLQRAYR
Purity	85%, by SDS-PAGE with Coomassie Brilliant Blue staining.
Storage	Store at 2-8°C for 1-2 weeks. Aliquot and store at -20°C to -80°C for up to 3 months, reconstitution with sterile water and addition of an equal volume of glycerol. Avoid repeat freeze-thaw cycles.

 Tel: 1-631-559-9269 1-516-512-3133

 Email: info@creative-biomart.com  Fax: 1-631-938-8127

 45-1 Ramsey Road, Shirley, NY 11967, USA

Reconstitution

Dissolve the product in 200 µl sterile water to achieve a working concentration of 0.25 g/µl. If experimental compatibility allows, mix the aqueous solution with an equal volume of glycerol (1:1 ratio) after initial reconstitution.

GENE INFORMATION

Gene Name

SCN8A sodium channel, voltage gated, type VIII, alpha subunit [Homo sapiens]

Official Symbol

SCN8A

Synonyms

SCN8A; sodium channel, voltage gated, type VIII, alpha subunit; MED, sodium channel, voltage gated, type VIII, alpha polypeptide; sodium channel protein type 8 subunit alpha; CerIII; NaCh6; Nav1.6; PN4; hNa6/Scn8a voltage-gated sodium channel; voltage-gated sodium channel subunit alpha Nav1.6; MED; CIAT; CERIII; EIEE13; FLJ33996;

Gene ID

6334

mRNA Refseq

NM_001177984

Protein Refseq

NP_001171455

MIM

600702

UniProt ID

Q9UQD0

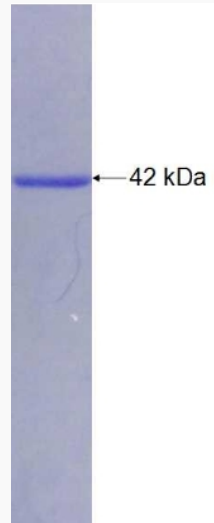
 Tel: 1-631-559-9269 1-516-512-3133

 Email: info@creative-biomart.com  Fax: 1-631-938-8127

 45-1 Ramsey Road, Shirley, NY 11967, USA



SDS-PAGE



Tel: 1-631-559-9269 1-516-512-3133

Email: info@creative-biomart.com Fax: 1-631-938-8127

45-1 Ramsey Road, Shirley, NY 11967, USA