

Recombinant Human SCNN1A Protein (Tyr112-Thr543), N-His tagged

Cat. No. SCNN1A-6242H Lot. No. (See product label)

SPECIFICATION

Product Overview	Recombinant human SCNN1A (Tyr112-Thr543) fused with the N-His tag was expressed in E. coli.
Species	Human
Source	E.coli
ProteinLength	Tyr112-Thr543
Form	Lyophilized powder/frozen liquid
Molecular Mass	52.13 kDa
Purity	> 90 % as determined by SDS-PAGE
Notes	For research use only.
Storage	Use a manual defrost freezer and avoid repeated freeze thaw cycles. Store at 2 to 8 centigrade for one week. Store at -20 to -80 centigrade for twelve months from the date of receipt.
Storage Buffer	0.01M PBS, pH 7.4, 0.02 % NLS
Reconstitution	Reconstitute in sterile water for a stock solution.

 Tel: 1-631-559-9269 1-516-512-3133

 Email: info@creative-biomart.com  Fax: 1-631-938-8127

 45-1 Ramsey Road, Shirley, NY 11967, USA

Shipping They are shipped out with dry ice/blue ice unless customers require otherwise.

GENE INFORMATION

Gene Name [SCNN1A sodium channel, non-voltage-gated 1 alpha subunit \[Homo sapiens \(human\) \]](#)

Official Symbol [SCNN1A](#)

Synonyms SCNN1A; sodium channel, non-voltage-gated 1 alpha subunit; SCNN1, sodium channel, non voltage gated 1 alpha, sodium channel, nonvoltage gated 1 alpha; amiloride-sensitive sodium channel subunit alpha; ENaCalpha; alpha-ENaC; alpha-NaCH; alpha ENaC-2; epithelial Na (+) channel subunit alpha; sodium channel, nonvoltage-gated 1 alpha; nasal epithelial sodium channel alpha subunit; nonvoltage-gated sodium channel 1 subunit alpha; amiloride-sensitive sodium channel subunit alpha 2; amiloride-sensitive epithelial sodium channel alpha subunit; BESC2; ENaCa; SCNEA; SCNN1; FLJ21883;

Gene ID [6337](#)

mRNA Refseq [NM_001038](#)

Protein Refseq [NP_001029](#)

MIM [600228](#)

UniProt ID [P37088](#)

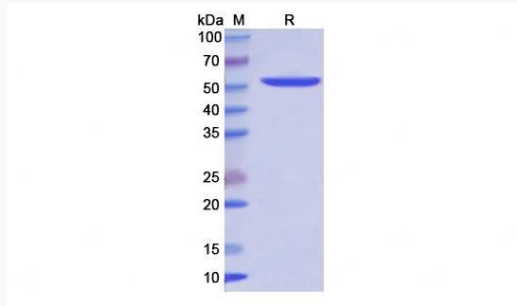
 Tel: 1-631-559-9269 1-516-512-3133

 Email: info@creative-biomart.com  Fax: 1-631-938-8127

 45-1 Ramsey Road, Shirley, NY 11967, USA



SDS-PAGE



Tel: 1-631-559-9269 1-516-512-3133

Email: info@creative-biomart.com Fax: 1-631-938-8127

45-1 Ramsey Road, Shirley, NY 11967, USA