

## Recombinant Human SCNN1A protein, His-tagged

Cat. No. SCNN1A-7843H Lot. No. (See product label)

### SPECIFICATION

<b>Product Overview</b>	Recombinant Human SCNN1A protein(440-604 aa), fused with N-terminal His tag, was expressed in E. coli.
<b>Species</b>	Human
<b>Source</b>	E.coli
<b>ProteinLength</b>	440-604 aa
<b>Form</b>	The purified protein was Lyophilized from sterile PBS (58mM Na <sub>2</sub> HPO <sub>4</sub> , 17mM NaH <sub>2</sub> PO <sub>4</sub> , 68mM NaCl, pH7.4). 5 % trehalose and 5 % mannitol are added as protectant before lyophilization. The elution buffer contain 300mM imidazole.
<b>Storage</b>	Short-term storage: Store at 2-8°C for (1-2 weeks). Long-term storage: Aliquot and store at -20°C to -80°C for up to 3 months, reconstitution with sterile water and addition of an equal volume of glycerol. Avoid repeat freeze-thaw cycles.
<b>Purity</b>	85%, by SDS-PAGE with Coomassie Brilliant Blue staining.

### GENE INFORMATION

<b>Official Symbol</b>	SCNN1A
<b>Synonyms</b>	SCNN1A; sodium channel, non-voltage-gated 1 alpha subunit; SCNN1, sodium channel, non voltage gated 1 alpha , sodium channel, nonvoltage gated 1 alpha;

 Tel: 1-631-559-9269 1-516-512-3133

 Email: [info@creative-biomart.com](mailto:info@creative-biomart.com)  Fax: 1-631-938-8127

 45-1 Ramsey Road, Shirley, NY 11967, USA

amiloride-sensitive sodium channel subunit alpha; ENaCalpha; alpha-ENaC; alpha-NaCH; alpha ENaC-2; epithelial Na(+) channel subunit alpha; sodium channel, nonvoltage-gated 1 alpha; nasal epithelial sodium channel alpha subunit; nonvoltage-gated sodium channel 1 subunit alpha; amiloride-sensitive sodium channel subunit alpha 2; amiloride-sensitive epithelial sodium channel alpha subunit; BESC2; ENaCa; SCNEA; SCNN1; FLJ21883;

**Gene ID** [6337](#)

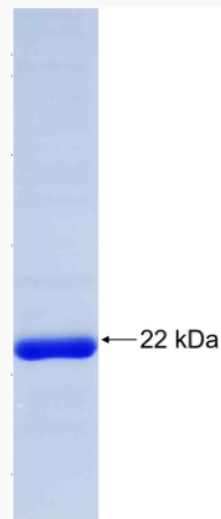
**mRNA Refseq** [NM\\_001038](#)

**Protein Refseq** [NP\\_001029](#)

**MIM** [600228](#)

**UniProt ID** [P37088](#)

**SDS-PAGE**



 Tel: 1-631-559-9269 1-516-512-3133

 Email: [info@creative-biomart.com](mailto:info@creative-biomart.com)  Fax: 1-631-938-8127

 45-1 Ramsey Road, Shirley, NY 11967, USA