

## Recombinant Human SCNN1A protein, His-tagged

Cat. No. SCNN1A-7976H Lot. No. (See product label)

### SPECIFICATION

|                         |  |
|-------------------------|--|
| <b>Product Overview</b> | Recombinant Human SCNN1A protein(112-539 aa), fused with N-terminal His tag, was expressed in E.coli.      |
| <b>Species</b>          | Human  |
| <b>Source</b>           | E.coli   |
| <b>ProteinLength</b>    | 112-539 aa   |
| <b>Form</b>             | PBS, pH7.4, containing 0.01% SKL, 5% Trehalose.  |
| <b>Molecular Mass</b>   | 53.1kDa  |
| <b>Endotoxin</b>        | <1.0EU per 1g (determined by the LAL method)   |
| <b>Purity</b>           | > 90%  |
| <b>Storage</b>          | Avoid repeated freeze/thaw cycles. Store at -20°C for 12 months. Aliquot and store at -80°C for 12 months. |
| <b>Reconstitution</b>   | Reconstitute in 10mM PBS (pH7.4) to a concentration of 0.1-1.0 mg/mL. Do not vortex.                       |

### GENE INFORMATION

 Tel: 1-631-559-9269 1-516-512-3133

 Email: [info@creative-biomart.com](mailto:info@creative-biomart.com)  Fax: 1-631-938-8127

 45-1 Ramsey Road, Shirley, NY 11967, USA

|                        |   |
|------------------------|---|
| <b>Gene Name</b>       | SCNN1A sodium channel, non-voltage-gated 1 alpha subunit [ Homo sapiens ]   |
| <b>Official Symbol</b> | SCNN1A  |
| <b>Synonyms</b>        | SCNN1A; sodium channel, non-voltage-gated 1 alpha subunit; SCNN1, sodium channel, non voltage gated 1 alpha , sodium channel, nonvoltage gated 1 alpha; amiloride-sensitive sodium channel subunit alpha; ENaCalpha; alpha-ENaC; alpha-NaCH; alpha ENaC-2; epithelial Na(+) channel subunit alpha; sodium channel, nonvoltage-gated 1 alpha; nasal epithelial sodium channel alpha subunit; nonvoltage-gated sodium channel 1 subunit alpha; amiloride-sensitive sodium channel subunit alpha 2; amiloride-sensitive epithelial sodium channel alpha subunit; BESC2; ENaCa; SCNEA; SCNN1; FLJ21883; |
| <b>Gene ID</b>         | 6337  |
| <b>mRNA Refseq</b>     | NM_001038   |
| <b>Protein Refseq</b>  | NP_001029   |
| <b>MIM</b>             | 600228  |
| <b>UniProt ID</b>      | P37088  |

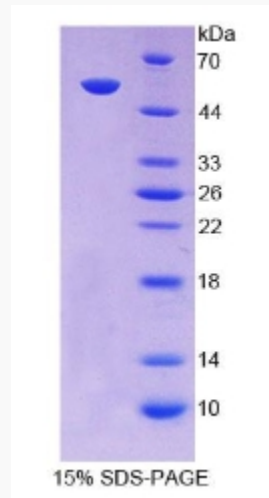
 Tel: 1-631-559-9269 1-516-512-3133

 Email: [info@creative-biomart.com](mailto:info@creative-biomart.com)  Fax: 1-631-938-8127

 45-1 Ramsey Road, Shirley, NY 11967, USA



SDS-PAGE



Tel: 1-631-559-9269 1-516-512-3133

Email: [info@creative-biomart.com](mailto:info@creative-biomart.com) Fax: 1-631-938-8127

45-1 Ramsey Road, Shirley, NY 11967, USA