

Recombinant Human SCNN1G protein, His-tagged

Cat. No. SCNN1G-300H Lot. No. (See product label)

SPECIFICATION

| | |
|-------------------------|---|
| Product Overview | Recombinant Human SCNN1G protein(NP_001030.2)(Met1~Val182), fused with N-terminal His tag, was expressed in E. coli. |
| Species | Human |
| Source | E.coli |
| ProteinLength | Met1~Val182 |
| Description | Nonvoltage-gated, amiloride-sensitive, sodium channels control fluid and electrolyte transport across epithelia in many organs. These channels are heteromeric complexes consisting of 3 subunits: alpha, beta, and gamma. This gene encodes the gamma subunit, and mutations in this gene have been associated with Liddle syndrome. |
| Form | 20mM Tris, 150mM NaCl, pH8.0, containing 0.01% SKL, 5% Trehalose. |
| Molecular Mass | 30kDa as determined by SDS-PAGE reducing conditions. |
| Endotoxin | <1.0EU per 1g (determined by the LAL method) |
| Purity | > 97% |
| Applications | Positive Control; Immunogen; SDS-PAGE; WB. If bio-activity of the protein is needed, please check active protein. |

 Tel: 1-631-559-9269 1-516-512-3133

 Email: info@creative-biomart.com  Fax: 1-631-938-8127

 45-1 Ramsey Road, Shirley, NY 11967, USA

| | |
|-----------------------|---|
| Notes | The kit is designed for research use only, we will not be responsible for any issue if the kit was used in clinical diagnostic or any other procedures. |
| Stability | The thermal stability is described by the loss rate. The loss rate was determined by accelerated thermal degradation test, that is, incubate the protein at 37°C for 48h, and no obvious degradation and precipitation were observed. The loss rate is less than 5% within the expiration date under appropriate storage condition. |
| Storage | Avoid repeated freeze/thaw cycles. Store at 2-8°C for one month. Aliquot and store at -80°C for 12 months. |
| Concentration | 150g/mL |
| Reconstitution | Reconstitute in 20mM Tris, 150mM NaCl (pH8.0) to a concentration of 0.1-1.0 mg/mL. Do not vortex. |

GENE INFORMATION

| | |
|------------------------|---|
| Gene Name | SCNN1G sodium channel epithelial 1 subunit gamma [Homo sapiens (human)] |
| Official Symbol | SCNN1G |
| Synonyms | PHA1; BESC3; ENaCg; LDLS2; SCNEG; ENaCgamma |
| Gene ID | 6340 |
| mRNA Refseq | NM_001039.4 |
| Protein Refseq | NP_001030.2 |
| MIM | 600761 |

 Tel: 1-631-559-9269 1-516-512-3133

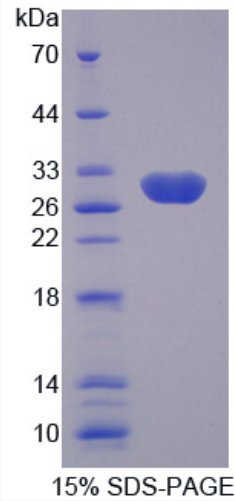
 Email: info@creative-biomart.com  Fax: 1-631-938-8127

 45-1 Ramsey Road, Shirley, NY 11967, USA

UniProt ID

P51170

SDS-PAGE of
SCNN1G-300H



 Tel: 1-631-559-9269 1-516-512-3133

 Email: info@creative-biomart.com  Fax: 1-631-938-8127

 45-1 Ramsey Road, Shirley, NY 11967, USA