

# Recombinant Human SCPEP1 Protein, Myc/DDK-tagged, C13 and N15-labeled

Cat. No. SCPEP1-4098H Lot. No. (See product label)

## SPECIFICATION

### Product Overview

SCPEP1 MS Standard C13 and N15-labeled recombinant protein (NP\_067639) with a C-terminal MYC/DDK tag, was expressed in HEK293 cells.

### Species

Human

### Source

HEK293

### Description

SCPEP1 (Serine Carboxypeptidase 1) is a Protein Coding gene. Diseases associated with SCPEP1 include Galactosialidosis and Epilepsy, Familial Temporal Lobe, 4. Gene Ontology (GO) annotations related to this gene include serine-type carboxypeptidase activity. An important paralog of this gene is CTSA.

### Molecular Mass

50.8 kDa

### AA Sequence

MELALRRSPVPRWLLLLPLLLGLNAGAVIDWPTEEGKEVWDYVTVRKDAYMFWWL  
 YYATNSCKNFSELPLVMWLQGGPGGSSTGFGNFEEIGPLDSLKPRKTTWLQAASL  
 LFVDNPVGTGFSYVNGSGAYAKDLAMVASDMMVLLKTTFFSCHKEFQTVPFYIFSES  
 YGGKMAAGIGLELYKAIQRGTIKCNFAGVALGDSWISPVDSVLSWGPYLYSMSLLED  
 KGLAEVSKVAEQVLNAVNGLYREATLWGKAEMIIQNTDGVNFYNILTKSTPTST  
 MESSLEFTQSHLVCLCQRHVRHLQRDALSQLMNGPIRKKLKIIPEDQSWGGQATNV  
 FVNMEEDFMKPVISIVDELLEAGINVTVYNGQLDLIVDTMGQEAWVRKLLKWPPEPKF  
 SQLKWKALYSDPKSLETSAFVKSYNLAFYWILKAGHMVPSDQGDMAKMMRLVT  
 QQETRTRPLEQKLISEEDLAANDILDYKDDDDKV

 Tel: 1-631-559-9269 1-516-512-3133

 Email: [info@creative-biomart.com](mailto:info@creative-biomart.com)  Fax: 1-631-938-8127

 45-1 Ramsey Road, Shirley, NY 11967, USA

<b>Purity</b>	> 80% as determined by SDS-PAGE and Coomassie blue staining
<b>Stability</b>	Stable for 3 months from receipt of products under proper storage and handling conditions.
<b>Storage</b>	Store at -80 centigrade. Avoid repeated freeze-thaw cycles.
<b>Concentration</b>	50 µg/mL as determined by BCA
<b>Storage Buffer</b>	100 mM glycine, 25 mM Tris-HCl, pH 7.3.

## GENE INFORMATION

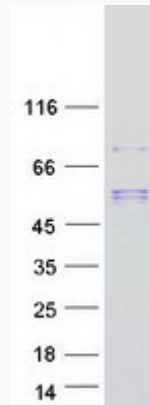
<b>Gene Name</b>	SCPEP1 serine carboxypeptidase 1 [ Homo sapiens (human) ]
<b>Official Symbol</b>	SCPEP1
<b>Synonyms</b>	SCPEP1; serine carboxypeptidase 1; retinoid-inducible serine carboxypeptidase; retinoid inducible serine carboxypeptidase; RISC; serine carboxypeptidase 1 precursor protein; HSCP1;
<b>Gene ID</b>	59342
<b>mRNA Refseq</b>	NM_021626
<b>Protein Refseq</b>	NP_067639
<b>UniProt ID</b>	Q9HB40

 Tel: 1-631-559-9269 1-516-512-3133

 Email: [info@creative-biomart.com](mailto:info@creative-biomart.com)  Fax: 1-631-938-8127

 45-1 Ramsey Road, Shirley, NY 11967, USA

**SDS-PAGE**



 Tel: 1-631-559-9269 1-516-512-3133

 Email: [info@creative-biomart.com](mailto:info@creative-biomart.com)  Fax: 1-631-938-8127

 45-1 Ramsey Road, Shirley, NY 11967, USA