

## Recombinant Human SCRG1 Protein (21-98 aa), His-tagged

Cat. No. SCRG1-1647H Lot. No. (See product label)

### SPECIFICATION

<b>Product Overview</b>	Recombinant Human SCRG1 Protein (21-98 aa) is produced by Yeast expression system. This protein is fused with a 6xHis tag at the N-terminal. Research Area: Neuroscience. Protein Description: Full Length of Mature Protein.
<b>Species</b>	Human
<b>Source</b>	Yeast
<b>ProteinLength</b>	21-98 aa
<b>Form</b>	Tris-based buffer,50% glycerol
<b>Molecular Mass</b>	10.9 kDa
<b>AA Sequence</b>	MPANRLSCYRKILKDHNCHNLPEGVADLTQIDVNVQDHFWDGKGCCEMICYCNFSEL LCCPKDVFFGPKISFVIPCNNQ
<b>Purity</b>	> 90% as determined by SDS-PAGE.
<b>Notes</b>	Repeated freezing and thawing is not recommended. Store working aliquots at 4 centigrade for up to one week.
<b>Storage</b>	The shelf life is related to many factors, storage state, buffer ingredients, storage temperature and the stability of the protein itself. Generally, the shelf life of liquid form is 6 months at -20 centigrade/-80 centigrade. The shelf life of lyophilized form is 12

 Tel: 1-631-559-9269 1-516-512-3133

 Email: [info@creative-biomart.com](mailto:info@creative-biomart.com)  Fax: 1-631-938-8127

 45-1 Ramsey Road, Shirley, NY 11967, USA

months at -20 centigrade/-80 centigrade.

**Concentration** A hardcopy of COA with reconstitution instruction is sent along with the products.

## GENE INFORMATION

**Gene Name** [SCRG1 stimulator of chondrogenesis 1 \[ Homo sapiens \]](#)

**Official Symbol** [SCRG1](#)

**Synonyms** [SCRG-1;](#)

**Gene ID** [11341](#)

**mRNA Refseq** [NM\\_007281.2](#)

**Protein Refseq** [NP\\_009212.1](#)

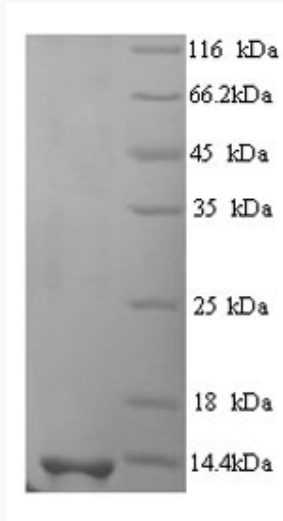
**MIM** [603163](#)

**UniProt ID** [O75711](#)

 Tel: 1-631-559-9269 1-516-512-3133

 Email: [info@creative-biomart.com](mailto:info@creative-biomart.com)  Fax: 1-631-938-8127

 45-1 Ramsey Road, Shirley, NY 11967, USA



(Tris-Glycine gel) Discontinuous SDS-PAGE (reduced) with 5% enrichment gel and 15% separation gel.

 Tel: 1-631-559-9269 1-516-512-3133

 Email: [info@creative-biomart.com](mailto:info@creative-biomart.com)  Fax: 1-631-938-8127

 45-1 Ramsey Road, Shirley, NY 11967, USA