

Recombinant Human SCRG1 Protein (21-98 aa), His-SUMO-tagged

Cat. No. SCRG1-996H **Lot. No.** (See product label)

SPECIFICATION

Product Overview	Recombinant Human SCRG1 Protein (21-98 aa) is produced by E. coli expression system. This protein is fused with a 6xHis-SUMO tag at the N-terminal. Research Area: Neuroscience. Protein Description: Full Length of Mature Protein.
Species	Human
Source	E.coli
ProteinLength	21-98 aa
Form	Tris-based buffer, 50% glycerol
Molecular Mass	24.9 kDa
AA Sequence	MPANRLSCYRKILKDHNCHNLPEGVADLTQIDVNVQDHFWDGKKGCEMICYCNFSEL LCCPKDVFFGPKISFVIPCNNQ
Purity	> 90% as determined by SDS-PAGE.
Notes	Repeated freezing and thawing is not recommended. Store working aliquots at 4 centigrade for up to one week.
Storage	The shelf life is related to many factors, storage state, buffer ingredients, storage temperature and the stability of the protein itself. Generally, the shelf life of liquid form

 Tel: 1-631-559-9269 1-516-512-3133

 Email: info@creative-biomart.com  Fax: 1-631-938-8127

 45-1 Ramsey Road, Shirley, NY 11967, USA

is 6 months at -20 centigrade/-80 centigrade. The shelf life of lyophilized form is 12 months at -20 centigrade/-80 centigrade.

Concentration A hardcopy of COA with concentration instruction is sent along with the products.

GENE INFORMATION

Gene Name [SCRG1 stimulator of chondrogenesis 1 \[Homo sapiens \]](#)

Official Symbol [SCRG1](#)

Synonyms [SCRG-1;](#)

Gene ID [11341](#)

mRNA Refseq [NM_007281.2](#)

Protein Refseq [NP_009212.1](#)

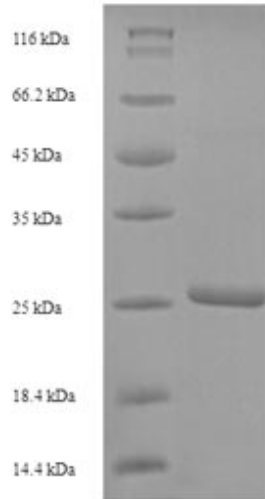
MIM [603163](#)

UniProt ID [O75711](#)

 Tel: 1-631-559-9269 1-516-512-3133

 Email: info@creative-biomart.com  Fax: 1-631-938-8127

 45-1 Ramsey Road, Shirley, NY 11967, USA



(Tris-Glycine gel) Discontinuous SDS-PAGE (reduced) with 5% enrichment gel and 15% separation gel.

 Tel: 1-631-559-9269 1-516-512-3133

 Email: info@creative-biomart.com  Fax: 1-631-938-8127

 45-1 Ramsey Road, Shirley, NY 11967, USA