

# Recombinant Human SCRIN1 Protein, Myc/DDK-tagged, C13 and N15-labeled

Cat. No. SCRIN1-3506H Lot. No. (See product label)

## SPECIFICATION

### Product Overview

SCRIN1 MS Standard C13 and N15-labeled recombinant protein (NP\_055581) with a C-terminal MYC/DDK tag, was expressed in HEK293 cells.

### Species

Human

### Source

HEK293

### Description

This gene likely encodes a member of the secernin family of proteins. A similar protein in rat functions in regulation of exocytosis in mast cells. Alternatively spliced transcript variants have been described.

### Molecular Mass

46.4 kDa

### AA Sequence

MAAAPPSYCFVAFPPRAKDGLVVFVGKNSARPRDEVQEVVYFSAADHEPESKVECTY  
 ISIDQVPRTYAIMISRPAWLWGAEMGANEHGVCIANEAINTREPAAEIEALLGMDLVR  
 LGLERGETAKEALDVIVSLLEEHHGQGGNYFEDANSCHSFQSAYLIVDRDEAWVLETI  
 GKYWAAEKVTEGVRCICSQLSLTTKMDAEHPELRSYAQSQGWWTGEGEFNFSEVF  
 SPVEDHLDCGAGKDSLEKQEEISITVQTMNLTLDKASGVCIDSEFFLTTASGVSVLP  
 QNRSSPCIHFTGTHDPSRSIFKPFIFVDDVKLVPKTQSPCFGDDDDPAKKEPRFQEK  
 PDRRHELYKAHEWARAIIESDQEQGRKLRSTMLELEKQGLEAMEEILTSSEPLDPAE  
 VGDLFYDCVDTEIKFFKTRTRPLEQKLISEEDLAANDILDYKDDDDKV

### Purity

> 80% as determined by SDS-PAGE and Coomassie blue staining

 Tel: 1-631-559-9269 1-516-512-3133

 Email: [info@creative-biomart.com](mailto:info@creative-biomart.com)  Fax: 1-631-938-8127

 45-1 Ramsey Road, Shirley, NY 11967, USA

<b>Stability</b>	Stable for 3 months from receipt of products under proper storage and handling conditions.
<b>Storage</b>	Store at -80 centigrade. Avoid repeated freeze-thaw cycles.
<b>Concentration</b>	50 µg/mL as determined by BCA
<b>Storage Buffer</b>	100 mM glycine, 25 mM Tris-HCl, pH 7.3.

## GENE INFORMATION

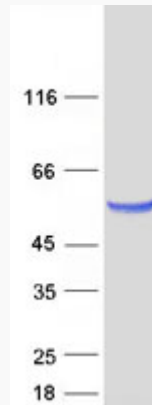
<b>Gene Name</b>	SCRN1 secernin 1 [ Homo sapiens (human) ]
<b>Official Symbol</b>	SCRN1
<b>Synonyms</b>	SCRN1; secernin 1; SES1; secernin-1
<b>Gene ID</b>	9805
<b>mRNA Refseq</b>	NM_014766
<b>Protein Refseq</b>	NP_055581
<b>MIM</b>	614965
<b>UniProt ID</b>	Q12765

 Tel: 1-631-559-9269 1-516-512-3133

 Email: [info@creative-biomart.com](mailto:info@creative-biomart.com)  Fax: 1-631-938-8127

 45-1 Ramsey Road, Shirley, NY 11967, USA

**SDS-PAGE**



 Tel: 1-631-559-9269 1-516-512-3133

 Email: [info@creative-biomart.com](mailto:info@creative-biomart.com)  Fax: 1-631-938-8127

 45-1 Ramsey Road, Shirley, NY 11967, USA