

Recombinant Human SCYL1 Protein, Myc/DDK-tagged, C13 and N15-labeled

Cat. No. SCYL1-5555H Lot. No. (See product label)

SPECIFICATION

Product Overview

SCYL1 MS Standard C13 and N15-labeled recombinant protein (NP_001041683) with a C-terminal MYC/DDK tag, was expressed in HEK293 cells.

Species

Human

Source

HEK293

Description

This gene encodes a transcriptional regulator belonging to the SCY1-like family of kinase-like proteins. The protein has a divergent N-terminal kinase domain that is thought to be catalytically inactive, and can bind specific DNA sequences through its C-terminal domain. It activates transcription of the telomerase reverse transcriptase and DNA polymerase beta genes. The protein has been localized to the nucleus, and also to the cytoplasm and centrosomes during mitosis. Multiple transcript variants encoding different isoforms have been found for this gene.

Molecular Mass

87.9 kDa

AA Sequence

MWFFARDPVRDFPFELIPEPPEGGLPGPWALHRGRKKATGSPVSIFVYDVKPGAEE
 QTQVAKAAFKRFKTLRHPNILAYIDGLETEKCLHVVTEAVTPLGIYLKARVEAGGLKEL
 EISWGLHQIVKALSFLVNDCSLIHNNVCMMAAVFVDRAGEWKLGLDYMYSAQGNGG
 GPPRKGIPLEQYDPPELADSSGRVVREKWSADMWRLGCLIWEVFNGPLPRAAAL
 RNP GKIPKTLVPHYCELVGANPKVRPNPARFLQNCRAPGGFMSNRFVETNLFLEEQ
 IKEPAEKQKFFQELSKSLDAFPEDFCRHKVLPQLLTAFEFGNAGAVVLTPLFKVKGKFL

 Tel: 1-631-559-9269 1-516-512-3133

 Email: info@creative-biomart.com  Fax: 1-631-938-8127

 45-1 Ramsey Road, Shirley, NY 11967, USA

SAEEYQQKIIPVVVVKMFSSTDRAMRIRLLQQMEQFIQYLDEPTVNTQIFPHVVHGFLD
 TNPAIREQTVKSMLLLAPKLNEANLNVELMKHFARLQAKDEQGPIRCNTTVCLGKIGS
 YLSASTRHRVLTSAFSRATRDPFAPSRVAGVLGFAATHNLYSMNDCAQKILPVLGCL
 TVDPEKSVRDQAFKAIRSFLSKLESVSEDPTQLEEVEKDVHAASSPGMGAAASWA
 GWAVTGVSSLTSKLIRSHPTTAPTETNIPQRPTPEGHWETQEEDKDTAEDSSTADR
 WDDDEDWGSLEQEAESVLAQQDDWSTGGQVSRASQVSNSDHKSSKSPESDWSSW
 EAEGSWEQGWQEPSSQEPPPDGTRLASEYNWGGPESSDKGDPFATLSARPSTQP
 RPDSWGEDNWEGLETD SRQVKAELARKKREERRREMEAKRAERKVAKGPMKLAGA
 RKLDTRTRPLEQKLISEEDLAANDILDYKDDDDKV

Purity > 80% as determined by SDS-PAGE and Coomassie blue staining

Stability Stable for 3 months from receipt of products under proper storage and handling conditions.

Storage Store at -80 centigrade. Avoid repeated freeze-thaw cycles.

Concentration 50 µg/mL as determined by BCA

Storage Buffer 100 mM glycine, 25 mM Tris-HCl, pH 7.3.

GENE INFORMATION

Gene Name [SCYL1 SCY1 like pseudokinase 1 \[Homo sapiens \(human\) \]](#)

Official Symbol [SCYL1](#)

Synonyms

SCYL1; SCY1-like 1 (S. cerevisiae); N terminal kinase like, NTKL; N-terminal kinase-like protein; GKLP; HT019; MGC78454; NKTL; P105; TAPK; TEIF; telomerase regulation associated protein; telomerase transcriptional elements interacting factor; teratoma associated tyrosine kinase; TRAP; SCY1-like protein 1; teratoma-associated

 Tel: 1-631-559-9269 1-516-512-3133

 Email: info@creative-biomart.com  Fax: 1-631-938-8127

 45-1 Ramsey Road, Shirley, NY 11967, USA

tyrosine kinase; telomerase regulation-associated protein; coated vesicle-associated kinase of 90 kDa; telomerase transcriptional element-interacting factor; telomerase transcriptional elements-interacting factor; likely ortholog of mouse N-terminal kinase-like protein; NTKL;

Gene ID [57410](#)

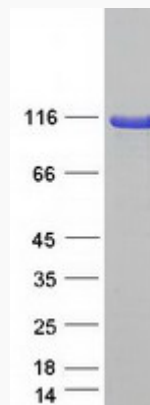
mRNA Refseq [NM_001048218](#)

Protein Refseq [NP_001041683](#)

MIM [607982](#)

UniProt ID [Q96KG9](#)

SDS-PAGE



 Tel: 1-631-559-9269 1-516-512-3133

 Email: info@creative-biomart.com  Fax: 1-631-938-8127

 45-1 Ramsey Road, Shirley, NY 11967, USA