

Recombinant *Oryctolagus cuniculus* syndecan 1 Protein, His&Flag tagged

Cat. No. SDC1-0830 Lot. No. (See product label)

SPECIFICATION

Product Overview

Recombinant *Oryctolagus cuniculus* SDC1 protein (G1TUQ1) (Gln 114-Gly 345) with both His, Flag tag at the C-terminus was expressed in HEK293.

Species

Oryctolagus cuniculus

Source

HEK293

ProteinLength

114-345aa

Description

The protein encoded by this gene is a transmembrane (type I) heparan sulfate proteoglycan and is a member of the syndecan proteoglycan family. The syndecans mediate cell binding, cell signaling, and cytoskeletal organization and syndecan receptors are required for internalization of the HIV-1 tat protein. The syndecan-1 protein functions as an integral membrane protein and participates in cell proliferation, cell migration and cell-matrix interactions via its receptor for extracellular matrix proteins. Altered syndecan-1 expression has been detected in several different tumor types. While several transcript variants may exist for this gene, the full-length nature of only two have been described to date. These two represent the major variants of this gene and encode the same protein.

Tag

C-His&Flag

Molecular Mass

26.2 kDa

 Tel: 1-631-559-9269 1-516-512-3133

 Email: info@creative-biomart.com  Fax: 1-631-938-8127

 45-1 Ramsey Road, Shirley, NY 11967, USA

Endotoxin	Less than 1.0 EU/μg by the LAL method.
Purity	>95% as determined by SDS-PAGE.
Storage	Please avoid repeated freeze-thaw cycles. Samples are stable for up to twelve months from date of receipt at -20 to -80 centigrade. It is recommended that aliquot the reconstituted solution to minimize freeze-thaw cycles.
Storage Buffer	Lyophilized from a 0.2 μm filtered solution of PBS, pH7.4, 5% Trehalose, 5% mannitol.
Reconstitution	Reconstitute at 250 μg/mL in sterile water.

GENE INFORMATION

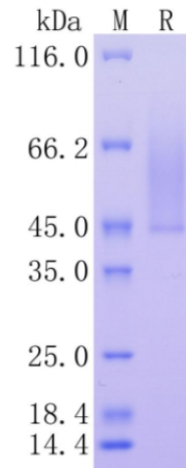
Gene Name	SDC1 syndecan 1 [<i>Oryctolagus cuniculus</i> (rabbit)]
Official Symbol	SDC1
Synonyms	SDC1; syndecan 1; syndecan-1
Gene ID	100338470
mRNA Refseq	XM_008254768.2
Protein Refseq	XP_008252990.2
UniProt ID	G1TUQ1

 Tel: 1-631-559-9269 1-516-512-3133

 Email: info@creative-biomart.com  Fax: 1-631-938-8127

 45-1 Ramsey Road, Shirley, NY 11967, USA

**Protein on SDS-
PAGE under
reducing (R)
condition.**



 Tel: 1-631-559-9269 1-516-512-3133

 Email: info@creative-biomart.com  Fax: 1-631-938-8127

 45-1 Ramsey Road, Shirley, NY 11967, USA