

## Recombinant Human SDC1 Protein, C-His-tagged

Cat. No. SDC1-126H Lot. No. (See product label)

### SPECIFICATION


**Product Overview** Recombinant Human SDC1 Protein with C-His tag was expressed in E. coli.

**Species** Human

**Source** E.coli

#### Description

Syndecans are a family of type 1 transmembrane heparan sulphate proteoglycans comprising four members in mammals (SDC-1 to -4) encoded by four syndecan genes. Syndecans are involved in embryonic development, tumorigenesis, and angiogenesis. The extracellular domain harbors attachment sites for heparan sulfate and chondroitin sulfate chains, facilitating interaction with an array of proteins including a plethora of growth factors. In addition, the hydrophobic C-terminal intracellular domain can interact with proteins containing a PDZ domain. These interactions place syndecans as important integrators of membrane signaling. Syndecans undergo proteolytic cleavage causing the release of their extracellular domain (shedding), converting the membrane-bound proteins into soluble molecular effectors. Syndecan 1 (SDC1) is a specific marker for plasmacytic differentiation in hematologic disorders. This cell surface proteoglycan is also expressed in normal epithelial cells and tissues as well as various types of cancer tissues. The extracellular shed form of syndecan 1 remains soluble or accumulates in the extracellular matrix where it binds growth factors, cytokines and other extracellular matrix proteins. This binding activates signaling of bound growth factors or cytokines, which results in enhanced tumor growth, dissemination, angiogenesis, and osteolysis. As a result, the level of syndecan1 protein and its shed form may serve as prognostic

 Tel: 1-631-559-9269 1-516-512-3133

 Email: [info@creative-biomart.com](mailto:info@creative-biomart.com)  Fax: 1-631-938-8127

 45-1 Ramsey Road, Shirley, NY 11967, USA

factors for a list of malignancies.

**Molecular Mass** ~26 kDa

**AA Sequence**

QIVATNLPPEDQDGSGDDSDNFSGSGAGALQDITLSQQTPSTWKDTQLLTAIPTSPE  
PTGLEATAASTSTLPAGEGPKKEGEAVVLPEVEPGLTAREQEATPRPRETTQLPTTHL  
ASTTTATTAQEPATSHPHRDMQPGHETSTPAGPSQADLHTPHTEDGGPSATERA  
AEDGASSQLPAAEGSGEQDFTFETSGENTAVVAVEPDRRNQSPVDQGATGASQGL  
LDRKEVLG

**Purity**

Transferred into competent cells and the supernatant was purified by NI column affinity chromatography and the purity is > 85% (by SDS-PAGE).

**Notes**

For research use only, not for use in diagnostic procedure.

**Storage**

Store at 4 centigrade short term. Aliquot and store at -20 centigrade long term. Avoid freeze-thaw cycles.

**Concentration**

≥0.5 mg/mL

**Storage Buffer**

PBS, 4M Urea, pH7.4

## GENE INFORMATION

**Gene Name**

SDC1 syndecan 1 [ Homo sapiens (human) ]

**Official Symbol**

SDC1

**Synonyms**

SDC1; syndecan 1; SDC; syndecan-1; CD138; SYND1; syndecan; syndecan proteoglycan 1; CD138 antigen; heparan sulfate proteoglycan fibroblast growth factor receptor;

 Tel: 1-631-559-9269 1-516-512-3133

 Email: [info@creative-biomart.com](mailto:info@creative-biomart.com)  Fax: 1-631-938-8127

 45-1 Ramsey Road, Shirley, NY 11967, USA

**Gene ID** 6382

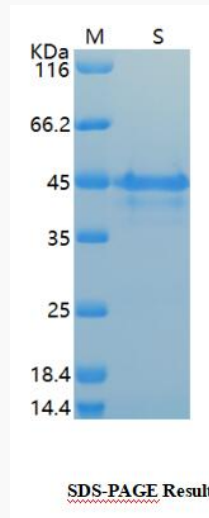
**mRNA Refseq** NM\_001006946


**Protein Refseq** NP\_001006947

**MIM** 186355


**UniProt ID** P18827

**SDS-PAGE**



 Tel: 1-631-559-9269 1-516-512-3133

 Email: [info@creative-biomart.com](mailto:info@creative-biomart.com)  Fax: 1-631-938-8127

 45-1 Ramsey Road, Shirley, NY 11967, USA